

## Product datasheet for **AP50976PU-N**

### CLPX (C-term) Rabbit Polyclonal Antibody

#### Product data:

|                         |  |
|-------------------------|--|
| Product Type:           | Primary Antibodies   |
| Applications:           | FC, IHC, WB  |
| Recommended Dilution:   | <b>ELISA:</b> 1/1000.<br><b>Western blot:</b> 1/100 - 1/500.<br><b>Immunohistochemistry on paraffin sections:</b> 1/50 - 1/100.<br><b>Flow Cytometry:</b> 1/10 - 1/50. |
| Reactivity:             | Human, Mouse   |
| Host:                   | Rabbit   |
| Isotype:                | Ig   |
| Clonality:              | Polyclonal   |
| Immunogen:              | KLH conjugated synthetic peptide between 452-481 amino acids from the C-terminal region of human CLPX  |
| Specificity:            | This antibody reacts to CLPX.  |
| Formulation:            | PBS<br>State: Aff - Purified<br>State: Liquid purified Ig fraction<br>Preservative: 0.09% (W/V) sodium azide   |
| Concentration:          | lot specific   |
| Purification:           | Affinity chromatography on Protein A   |
| Conjugation:            | Unconjugated   |
| Storage:                | Store undiluted at 2-8°C for one month or (in aliquots) at -20°C for longer.<br>Avoid repeated freezing and thawing.   |
| Stability:              | Shelf life: one year from despatch.  |
| Predicted Protein Size: | 69224 Da   |
| Gene Name:              | caseinolytic mitochondrial matrix peptidase chaperone subunit  |
| Database Link:          | <a href="#">Entrez Gene 10845 Human</a><br><a href="#">O76031</a>  |



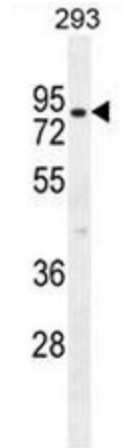
[View online »](#)

**Background:** ATP-dependent specificity component of the Clp protease. It directs the protease to specific substrates. Can perform chaperone functions in the absence of clpP (By similarity).

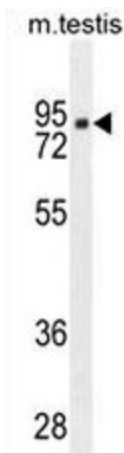
**Synonyms:** CLPX

**Protein Families:** Protease

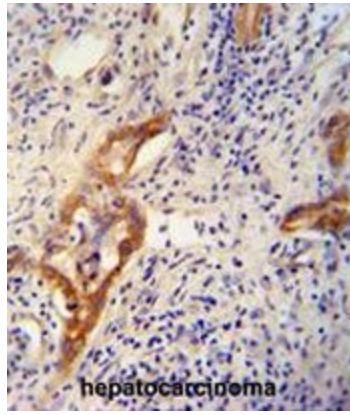
**Product images:**



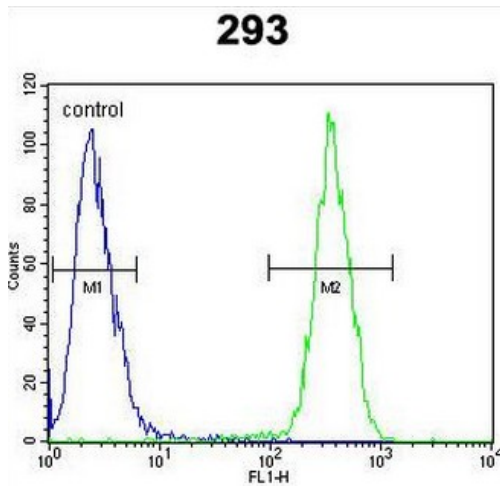
CLPX Antibody (C-term) western blot analysis in 293 cell line lysates (35ug/lane). This demonstrates the CLPX antibody detected the CLPX protein (arrow).



CLPX Antibody (C-term) western blot analysis in mouse testis tissue lysates (35ug/lane). This demonstrates the CLPX antibody detected the CLPX protein (arrow).



CLPX antibody (C-term) immunohistochemistry analysis in formalin fixed and paraffin embedded human hepatocarcinoma followed by peroxidase conjugation of the secondary antibody and DAB staining. This data demonstrates the use of the CLPX antibody (C-term) for immunohistochemistry. Clinical relevance has not been evaluated.



CLPX Antibody (C-term) flow cytometric analysis of 293 cells (right histogram) compared to a negative control cell (left histogram). FITC-conjugated goat-anti-rabbit secondary antibodies were used for the analysis.