

## Product datasheet for **AP50975PU-N**

### CLPTM1L (C-term) Rabbit Polyclonal Antibody

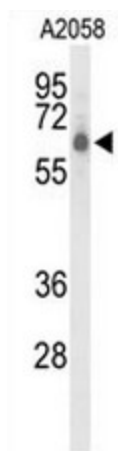
#### Product data:

Product Type:	Primary Antibodies
Applications:	WB
Recommended Dilution:	<b>ELISA:</b> 1/1000. <b>Western blot:</b> 1/100 - 1/500.
Reactivity:	Human
Host:	Rabbit
Isotype:	Ig
Clonality:	Polyclonal
Immunogen:	KLH conjugated synthetic peptide selected between amino acids 508-538 of human CLPTM1L
Specificity:	This antibody reacts to CLPTM1L.
Formulation:	PBS State: Aff - Purified State: Liquid purified Ig fraction Preservative: 0.09% (W/V) sodium azide
Concentration:	lot specific
Purification:	Affinity chromatography on Protein A
Conjugation:	Unconjugated
Storage:	Store undiluted at 2-8°C for one month or (in aliquots) at -20°C for longer. Avoid repeated freezing and thawing.
Stability:	Shelf life: one year from despatch.
Predicted Protein Size:	62229 Da
Gene Name:	CLPTM1-like
Database Link:	<a href="#">Entrez Gene 81037 Human Q96KA5</a>
Background:	CLPTM1L enhances cisplatin-mediated apoptosis, when overexpressed
Synonyms:	CLPTM1L, CRR9, CRR9p
Protein Families:	Transmembrane



[View online »](#)

## Product images:



Western blot analysis of CLPTM1L Antibody (C-term) in A2058 cell line lysates (35ug/lane). CLPTM1L (arrow) was detected using the purified Pab.