

Product datasheet for **AP50972PU-N**

CLPB (C-term) Rabbit Polyclonal Antibody

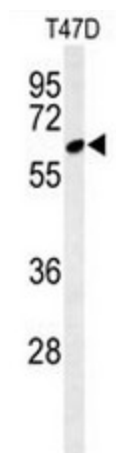
Product data:

Product Type:	Primary Antibodies
Applications:	WB
Recommended Dilution:	ELISA: 1/1000. Western blot: 1/1000.
Reactivity:	Human
Host:	Rabbit
Isotype:	Ig
Clonality:	Polyclonal
Immunogen:	KLH conjugated synthetic peptide between 673~702 amino acids from the C-terminal region of Human CLPB
Specificity:	This antibody reacts to CLPB.
Formulation:	PBS State: Aff - Purified State: Liquid purified Ig fraction Preservative: 0.09% (W/V) sodium azide
Concentration:	lot specific
Purification:	Affinity Chromatography on Protein A
Conjugation:	Unconjugated
Storage:	Store undiluted at 2-8°C for one month or (in aliquots) at -20°C for longer. Avoid repeated freezing and thawing.
Stability:	Shelf life: one year from despatch.
Predicted Protein Size:	78729 Da
Gene Name:	ClpB homolog, mitochondrial AAA ATPase chaperonin
Database Link:	Entrez Gene 81570 Human Q9H078
Synonyms:	HSP78, SKD3



[View online »](#)

Product images:



Western blot analysis of CLPB Antibody (C-term) in T47D cell line lysates (35ug/lane). CLPB (arrow) was detected using the purified Pab.