

## Product datasheet for **AP50968PU-N**

### CD300 (CD300LF) (N-term) Rabbit Polyclonal Antibody

#### Product data:

Product Type:	Primary Antibodies
Applications:	FC, IHC, WB
Recommended Dilution:	<b>ELISA:</b> 1/1000 (peptide ELISA only) <b>Western blot:</b> 1/500 - 1/1000. <b>Immunohistochemistry on paraffin sections:</b> 1/50 - 1/100. <b>Flow Cytometry:</b> 1/10 - 1/50.
Reactivity:	Human
Host:	Rabbit
Isotype:	Ig
Clonality:	Polyclonal
Immunogen:	KLH conjugated synthetic peptide between 63~92 amino acids from the N-terminal region of human CLM1
Specificity:	This antibody reacts to CLM1.
Formulation:	PBS State: Aff - Purified State: Liquid purified Ig fraction Preservative: 0.09% (W/V) sodium azide
Concentration:	lot specific
Purification:	Affinity chromatography on Protein A
Conjugation:	Unconjugated
Storage:	Store undiluted at 2-8°C for one month or (in aliquots) at -20°C for longer. Avoid repeated freezing and thawing.
Stability:	Shelf life: one year from despatch.
Predicted Protein Size:	32335 Da
Gene Name:	CD300 molecule like family member f
Database Link:	<a href="#">Entrez Gene 146722 Human Q8TDQ1</a>



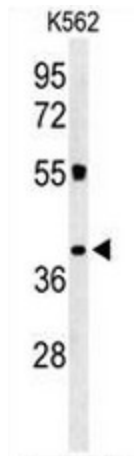
[View online »](#)

**Background:** CLM1 is an inhibitory receptor of the Ig superfamily expressed on myeloid cells. It mediates negative regulatory signals by recruiting SHP1 (PTPN6; MIM 176883) or SHIP.

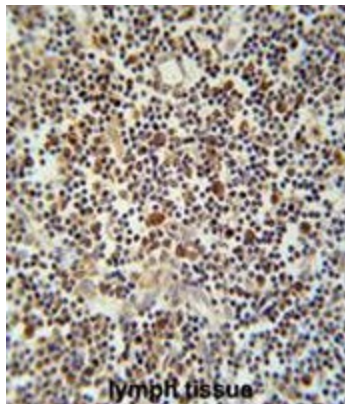
**Synonyms:** CMRF35-like molecule 1, CLM1, IGSF13, IREM1, NKIR, CD300 antigen-like family member F, Immune receptor expressed on myeloid cells 1, IREM-1, Immunoglobulin superfamily member 13, IgSF13, NK inhibitory receptor

**Protein Families:** Druggable Genome, Transmembrane

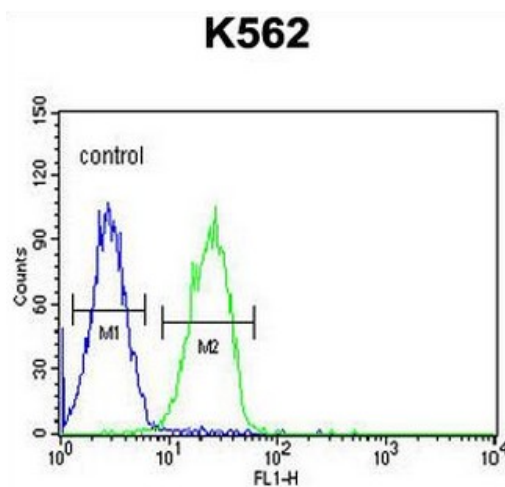
**Product images:**



Western blot analysis of CLM1 Antibody (N-term) in K562 cell line lysates (35ug/lane). CLM1 (arrow) was detected using the purified Pab.



CLM1 Antibody (N-term) immunohistochemistry analysis in formalin fixed and paraffin embedded human lymph tissue followed by peroxidase conjugation of the secondary antibody and DAB staining. This data demonstrates the use of the CLM1 Antibody (N-term) for immunohistochemistry. Clinical relevance has not been evaluated.



CLM1 Antibody (N-term) flow cytometric analysis of K562 cells (right histogram) compared to a negative control cell (left histogram). FITC-conjugated goat-anti-rabbit secondary antibodies were used for the analysis.