

Product datasheet for **AP50967PU-N**

CLK2 (Center) Rabbit Polyclonal Antibody

Product data:

Product Type:	Primary Antibodies
Applications:	WB
Recommended Dilution:	ELISA: 1/1000. Western blot: 1/100 - 1/500.
Reactivity:	Human
Host:	Rabbit
Isotype:	Ig
Clonality:	Polyclonal
Immunogen:	KLH conjugated synthetic peptide between 290-319 amino acids from the Central region of human CLK2
Specificity:	This antibody reacts to CLK2.
Formulation:	PBS State: Aff - Purified State: Liquid purified Ig fraction Preservative: 0.09% (W/V) sodium azide
Concentration:	lot specific
Purification:	Affinity chromatography on Protein A
Conjugation:	Unconjugated
Storage:	Store undiluted at 2-8°C for one month or (in aliquots) at -20°C for longer. Avoid repeated freezing and thawing.
Stability:	Shelf life: one year from despatch.
Predicted Protein Size:	60090 Da
Gene Name:	CDC like kinase 2
Database Link:	Entrez Gene 1196 Human P49760



[View online »](#)

Background:

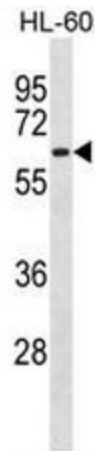
This gene encodes a member of the CLK family of dual specificity protein kinases. CLK family members have been shown to interact with, and phosphorylate, serine- and arginine-rich (SR) proteins of the spliceosomal complex, which is a part of the regulatory mechanism that enables the SR proteins to control RNA splicing. Note that this gene is distinct from TELO2 gene (GeneID:9894), which shares CLK2 and hCLK2 symbol aliases in common with this gene, but encodes a protein that is involved in telomere length regulation.

Synonyms:

CLK-2, CDC-like kinase 2

Protein Families:

Druggable Genome, Protein Kinase

Product images:

CLK2 Antibody (Center) western blot analysis in HL-60 cell line lysates (35ug/lane). This demonstrates the CLK2 antibody detected the CLK2 protein (arrow).