

Product datasheet for **AP50966PU-N**

CLIP4 (Center) Rabbit Polyclonal Antibody

Product data:

| | |
|-------------------------|--|
| Product Type: | Primary Antibodies |
| Applications: | WB |
| Recommended Dilution: | ELISA: 1/1000. Western blot: 1/100 - 1/500. |
| Reactivity: | Human |
| Host: | Rabbit |
| Isotype: | Ig |
| Clonality: | Polyclonal |
| Immunogen: | KLH conjugated synthetic peptide between 332-361 amino acids from the Central region of human CLIP4 |
| Specificity: | This antibody reacts to CLIP4. |
| Formulation: | PBS State: Aff - Purified State: Liquid purified Ig fraction Preservative: 0.09% (W/V) sodium azide |
| Concentration: | lot specific |
| Purification: | Affinity chromatography on Protein A |
| Conjugation: | Unconjugated |
| Storage: | Store undiluted at 2-8°C for one month or (in aliquots) at -20°C for longer. Avoid repeated freezing and thawing. |
| Stability: | Shelf life: one year from despatch. |
| Predicted Protein Size: | 37kd Isoform 4. 76317 Da |
| Gene Name: | CAP-Gly domain containing linker protein family member 4 |
| Database Link: | Entrez Gene 79745 Human Q8N3C7 |

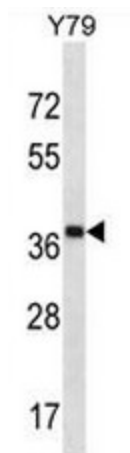


[View online »](#)

Background: UBASH3A, ubiquitin associated and SH3 domain containing, A, interferes with CBL-mediated down-regulation and degradation of receptor-type tyrosine kinases. Promotes accumulation of activated target receptors, such as T-cell receptors, EGFR and PDGFRB, on the cell surface (referenced from Swiss Prot).

Synonyms: RSNL2, Restin-like protein 2

Product images:



CLIP4 Antibody (Center) western blot analysis in Y79 cell line lysates (35ug/lane). This demonstrates the CLIP4 antibody detected the CLIP4 protein (arrow).