

## Product datasheet for **AP50965PU-N**

### CLIP3 (C-term) Rabbit Polyclonal Antibody

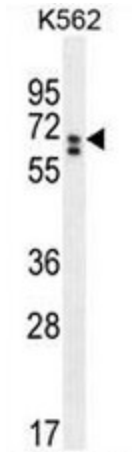
#### Product data:

Product Type:	Primary Antibodies
Applications:	FC, WB
Recommended Dilution:	<b>ELISA:</b> 1/1000. <b>Western blot:</b> 1/100 - 1/500. <b>Flow Cytometry:</b> 1/10 - 1/50.
Reactivity:	Human
Host:	Rabbit
Isotype:	Ig
Clonality:	Polyclonal
Immunogen:	KLH conjugated synthetic peptide between 368-396 amino acids from the C-terminal region of human CLIP3.
Specificity:	This antibody reacts to CLIP3.
Formulation:	PBS State: Aff - Purified State: Liquid purified Ig fraction Preservative: 59560 Da
Concentration:	lot specific
Purification:	Affinity chromatography on Protein A
Conjugation:	Unconjugated
Storage:	Store undiluted at 2-8°C for one month or (in aliquots) at -20°C for longer. Avoid repeated freezing and thawing.
Stability:	Shelf life: one year from despatch.
Predicted Protein Size:	59560 Da
Gene Name:	CAP-Gly domain containing linker protein 3
Database Link:	<a href="#">Entrez Gene 25999 Human Q96DZ5</a>
Synonyms:	CLIPR59, CLIPR-59

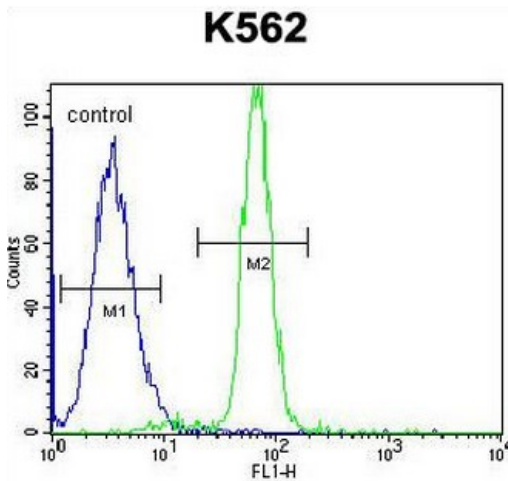


[View online »](#)

Product images:



CLIP3 Antibody (C-term) western blot analysis in K562 cell line lysates (35ug/lane). This demonstrates the CLIP3 antibody detected the CLIP3 protein (arrow).



CLIP3 Antibody (C-term) flow cytometric analysis of K562 cells (right histogram) compared to a negative control cell (left histogram). FITC-conjugated goat-anti-rabbit secondary antibodies were used for the analysis.