

Product datasheet for **AP50964PU-N**

CLIC6 (Center) Rabbit Polyclonal Antibody

Product data:

Product Type:	Primary Antibodies
Applications:	FC, IHC, WB
Recommended Dilution:	ELISA: 1/1000. Western blot: 1/100 - 1/500. Immunohistochemistry on paraffin sections: 1/50 - 1/100. Flow Cytometry: 1/10 - 1/50.
Reactivity:	Human
Host:	Rabbit
Isotype:	Ig
Clonality:	Polyclonal
Immunogen:	KLH conjugated synthetic peptide between 546-573 amino acids from the Central region of human CLIC6
Specificity:	This antibody reacts to CLIC6.
Formulation:	PBS State: Aff - Purified State: Liquid purified Ig fraction Preservative: 0.09% (W/V) sodium azide
Concentration:	lot specific
Purification:	Affinity chromatography on Protein A
Conjugation:	Unconjugated
Storage:	Store undiluted at 2-8°C for one month or (in aliquots) at -20°C for longer. Avoid repeated freezing and thawing.
Stability:	Shelf life: one year from despatch.
Predicted Protein Size:	73012 Da
Gene Name:	chloride intracellular channel 6
Database Link:	Entrez Gene 54102 Human Q96NY7



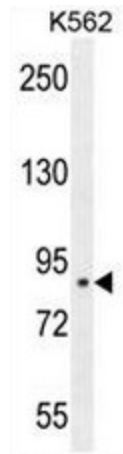
[View online »](#)

Background: CLIC6 is a member of the chloride intracellular channel family of proteins. The gene is part of a large triplicated region found on chromosomes 1, 6, and 21. An alternatively spliced transcript variant has been described, but its biological validity has not been determined.

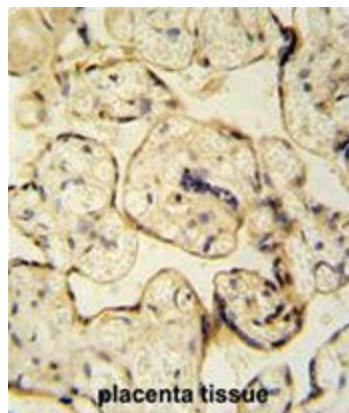
Synonyms: CLIC1L

Protein Families: Druggable Genome

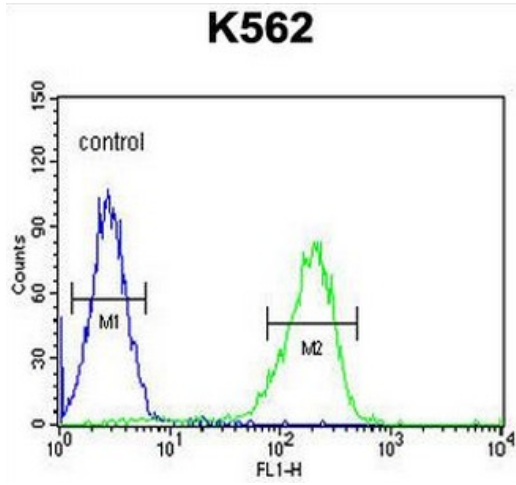
Product images:



CLIC6 Antibody (Center) western blot analysis in K562 cell line lysates (35ug/lane). This demonstrates the CLIC6 antibody detected the CLIC6 protein (arrow).



CLIC6 antibody (Center) immunohistochemistry analysis in formalin fixed and paraffin embedded human placenta tissue tissue followed by peroxidase conjugation of the secondary antibody and DAB staining. This data demonstrates the use of the CLIC6 antibody (Center) for immunohistochemistry. Clinical relevance has not been evaluated.



CLIC6 Antibody (Center) flow cytometric analysis of K562 cells (right histogram) compared to a negative control cell (left histogram). FITC-conjugated goat-anti-rabbit secondary antibodies were used for the analysis.