

Product datasheet for **AP50963PU-N**

CLEC4F (C-term) Rabbit Polyclonal Antibody

Product data:

Product Type:	Primary Antibodies
Applications:	IHC, WB
Recommended Dilution:	ELISA: 1/1000. Western blot: 1/100 - 1/500. Immunohistochemistry on paraffin sections: 1/50 - 1/100.
Reactivity:	Human
Host:	Rabbit
Isotype:	Ig
Clonality:	Polyclonal
Immunogen:	KLH conjugated synthetic peptide between 318-347 amino acids from the C-terminal region of human CLEC4F
Specificity:	This antibody reacts to CLEC4F.
Formulation:	PBS State: Aff - Purified State: Liquid purified Ig fraction Preservative: 0.09% (W/V) sodium azide
Concentration:	lot specific
Purification:	Affinity chromatography on Protein A
Conjugation:	Unconjugated
Storage:	Store undiluted at 2-8°C for one month or (in aliquots) at -20°C for longer. Avoid repeated freezing and thawing.
Stability:	Shelf life: one year from despatch.
Predicted Protein Size:	65519 Da
Gene Name:	C-type lectin domain family 4 member F
Database Link:	Entrez Gene 165530 Human Q8N1N0
Background:	Receptor with an affinity for galactose and fucose. Could be involved in endocytosis (By similarity).

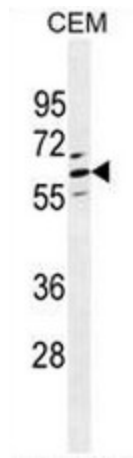


[View online »](#)

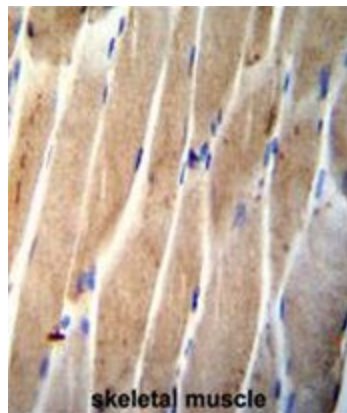
Synonyms: CLECSF13

Protein Families: Druggable Genome, Transmembrane

Product images:



CLEC4F Antibody (C-term) western blot analysis in CEM cell line lysates (35ug/lane). This demonstrates the CLEC4F antibody detected the CLEC4F protein (arrow).



CLEC4F Antibody (C-term) immunohistochemistry analysis in formalin fixed and paraffin embedded human skeletal muscle followed by peroxidase conjugation of the secondary antibody and DAB staining. This data demonstrates the use of CLEC4F Antibody (C-term) for immunohistochemistry. Clinical relevance has not been evaluated.