

Product datasheet for **AP50962PU-N**

Tetranectin (CLEC3B) (Center) Rabbit Polyclonal Antibody

Product data:

Product Type:	Primary Antibodies
Applications:	IHC, WB
Recommended Dilution:	ELISA: 1/1000. Western blot: 1/50 - 1/100. Immunohistochemistry on paraffin sections: 1/10 - 1/50.
Reactivity:	Human
Host:	Rabbit
Isotype:	Ig
Clonality:	Polyclonal
Immunogen:	KLH conjugated synthetic peptide between 102-130 amino acids from the Central region of human CLEC3B
Specificity:	This antibody reacts to CLEC3B.
Formulation:	PBS State: Purified State: Liquid purified Ig fraction Preservative: 0.09% (W/V) sodium azide
Concentration:	lot specific
Purification:	Saturated Ammonium Sulfate (SAS) precipitation
Conjugation:	Unconjugated
Storage:	Store undiluted at 2-8°C for one month or (in aliquots) at -20°C for longer. Avoid repeated freezing and thawing.
Stability:	Shelf life: one year from despatch.
Predicted Protein Size:	22567 Da
Gene Name:	C-type lectin domain family 3 member B
Database Link:	Entrez Gene 7123 Human P05452
Background:	Tetranectin binds to plasminogen and to isolated kringle 4. It may be involved in the packaging of molecules destined for exocytosis.

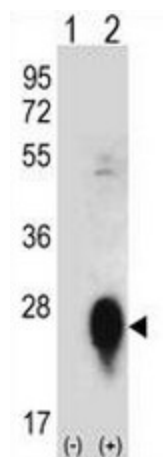


[View online »](#)

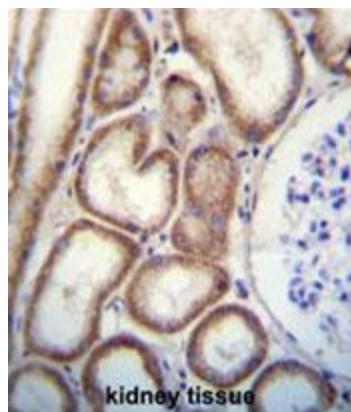
Synonyms: TNA, Tetranectin

Protein Families: Secreted Protein

Product images:



Western blot analysis of CLEC3B (arrow) using rabbit polyclonal CLEC3B Antibody (Center). 293 cell lysates (2 ug/lane) either nontransfected (Lane 1) or transiently transfected (Lane 2) with the CLEC3B gene.



CLEC3B Antibody (Center) immunohistochemistry analysis in formalin fixed and paraffin embedded human kidney tissue followed by peroxidase conjugation of the secondary antibody and DAB staining. This data demonstrates the use of CLEC3B Antibody (Center) for immunohistochemistry. Clinical relevance has not been evaluated.