

Product datasheet for **AP50960PU-N**

CLEC2A (Center) Rabbit Polyclonal Antibody

Product data:

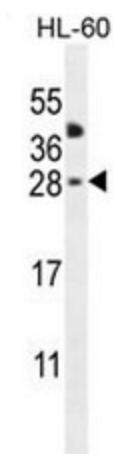
Product Type:	Primary Antibodies
Applications:	WB
Recommended Dilution:	ELISA: 1/1000. Western blot: 1/100 - 1/500.
Reactivity:	Human
Host:	Rabbit
Isotype:	Ig
Clonality:	Polyclonal
Immunogen:	KLH conjugated synthetic peptide between 79-107 amino acids from the Central region of human CLEC2A
Specificity:	This antibody reacts to CLEC2A.
Formulation:	PBS State: Aff - Purified State: Liquid purified Ig fraction Preservative: 0.09% (W/V) sodium azide
Concentration:	lot specific
Purification:	Affinity chromatography on Protein A
Conjugation:	Unconjugated
Storage:	Store undiluted at 2-8°C for one month or (in aliquots) at -20°C for longer. Avoid repeated freezing and thawing.
Stability:	Shelf life: one year from despatch.
Predicted Protein Size:	19972 Da
Gene Name:	C-type lectin domain family 2 member A
Database Link:	Entrez Gene 387836 Human Q6UWV9
Background:	CLEC2A belongs to the CLEC2 family of activation-induced, natural killer gene complex-encoded C-type lectin-like receptors (Spreu et al., 2007 [PubMed 18046548]).



[View online »](#)

Synonyms: C-type lectin domain family 2 member A, KACL, Keratinocyte-associated C-type lectin, KACL, Proliferation-induced lymphocyte-associated receptor, PILAR

Product images:



CLEC2A Antibody (Center) western blot analysis in HL-60 cell line lysates (35ug/lane). This demonstrates the CLEC2A antibody detected the CLEC2A protein (arrow).