

Product datasheet for **AP50959PU-N**

CLEC18A (C-term) Rabbit Polyclonal Antibody

Product data:

Product Type:	Primary Antibodies
Applications:	IHC, WB
Recommended Dilution:	ELISA: 1/1000. Western blot: 1/100-1/500. Immunohistochemistry on Paraffin Sections: 1/10-1/50.
Reactivity:	Human
Host:	Rabbit
Isotype:	Ig
Clonality:	Polyclonal
Immunogen:	KLH conjugated synthetic peptide between 345-375 amino acids from the C-terminal region of Human CLEC18A
Specificity:	This antibody detects CLEC18A at C-term.
Formulation:	PBS State: Aff - Purified State: Liquid purified Ig fraction Preservative: 0.09% (W/V) Sodium Azide
Concentration:	lot specific
Purification:	Affinity Chromatography on Protein A
Conjugation:	Unconjugated
Storage:	Store the antibody undiluted at 2-8°C for one month or (in aliquots) at -20°C for longer. Avoid repeated freezing and thawing.
Stability:	Shelf life: one year from despatch.
Predicted Protein Size:	49602 Da
Gene Name:	C-type lectin domain family 18 member A
Database Link:	Entrez Gene 348174 Human A5D8T8



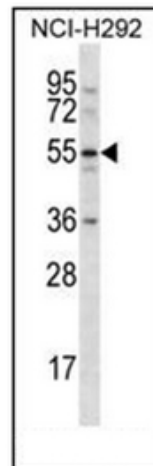
[View online »](#)

Background:

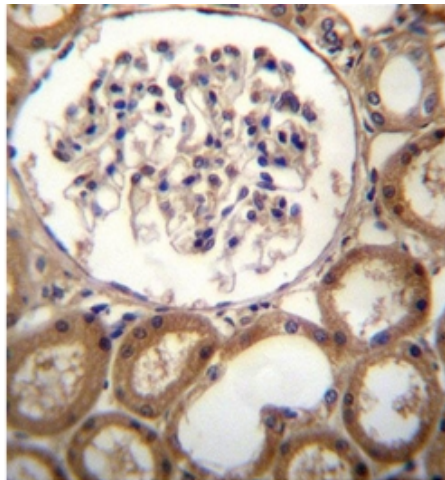
The C-type lectin/C-type lectin-like domain (CTL/CTLD) superfamily consists of a variety of proteins that share a common protein fold and have diverse functions, including cell-cell signaling, cell adhesion, glycoprotein turnover and immune responses. CLEC-18 (C-type lectin domain family 18) exists as three nearly identical forms, designated CLEC-18A, CLEC-18B and CLEC-18C, or mannose receptor-like protein 1, 2 and 3, respectively. Both CLEC-18A and CLEC-18C contain 446 amino acids, whereas CLEC-18B contains 455 amino acids; all three forms are secreted proteins that contain one C-type lectin domain, a SCP domain and a single EGF-like domain. All three CLEC-18 proteins exist as two alternatively spliced isoforms that are encoded by genes that map to human chromosome 16q22.

Synonyms:

MRLP2

Product images:

Western blot analysis in NCI-H292 cell line lysates (35ug/lane) using CLEC18A Antibody (C-term). This demonstrates the CLEC18A antibody detected the CLEC18A protein (arrow).



Immunohistochemistry analysis in formalin fixed and paraffin embedded human kidney tissue using CLEC18A Antibody (C-term), followed by peroxidase conjugation of the secondary antibody and DAB staining. This data demonstrates the use of CLEC18A Antibody (C-term) for immunohistochemistry. Clinical relevance has not been evaluated.