

## Product datasheet for **AP50958PU-N**

### CLEC12B (C-term) Rabbit Polyclonal Antibody

#### Product data:

Product Type:	Primary Antibodies
Applications:	IHC, WB
Recommended Dilution:	<b>ELISA:</b> 1/1000. <b>Western blot:</b> 1/100 - 1/500. <b>Immunohistochemistry on paraffin sections:</b> 1/50 - 1/100.
Reactivity:	Human, Mouse
Host:	Rabbit
Isotype:	Ig
Clonality:	Polyclonal
Immunogen:	KLH conjugated synthetic peptide between 245-276 amino acids from the C-terminal region of human CLEC12B
Specificity:	This antibody reacts to CLEC12B.
Formulation:	PBS State: Aff - Purified State: Liquid purified Ig fraction Preservative: 0.09% (W/V) sodium azide
Concentration:	lot specific
Purification:	Affinity chromatography on Protein A
Conjugation:	Unconjugated
Storage:	Store undiluted at 2-8°C for one month or (in aliquots) at -20°C for longer. Avoid repeated freezing and thawing.
Stability:	Shelf life: one year from despatch.
Predicted Protein Size:	31616 Da
Gene Name:	C-type lectin domain family 12 member B
Database Link:	<a href="#">Entrez Gene 387837 Human Q2HXU8</a>
Background:	Cell surface receptor that protects target cells against natural killer cell-mediated lysis. Modulates signaling cascades and mediates tyrosine phosphorylation of target MAP kinases.

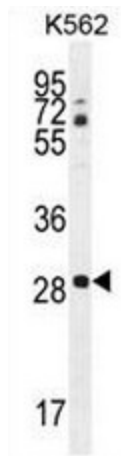


[View online »](#)

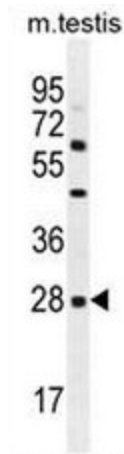
**Synonyms:** C-type lectin domain family 12 member B

**Protein Families:** Transmembrane

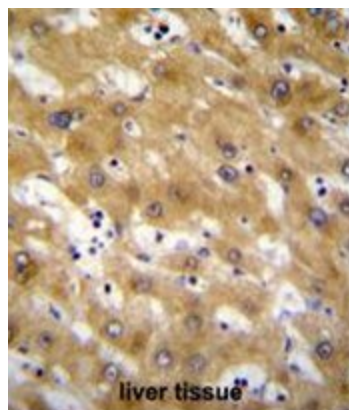
**Product images:**



CLEC12B Antibody (C-term) western blot analysis in K562 cell line lysates (35ug/lane). This demonstrates the CLEC12B antibody detected the CLEC12B protein (arrow).



CLEC12B Antibody (C-term) western blot analysis in mouse testis tissue lysates (35ug/lane). This demonstrates the CLEC12B antibody detected the CLEC12B protein (arrow).



CLEC12B Antibody (C-term) immunohistochemistry analysis in formalin fixed and paraffin embedded human liver tissue followed by peroxidase conjugation of the secondary antibody and DAB staining. This data demonstrates the use of CLEC12B Antibody (C-term) for immunohistochemistry. Clinical relevance has not been evaluated.