

Product datasheet for **AP50957PU-N**

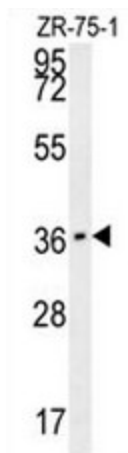
CLEC12A (Center) Rabbit Polyclonal Antibody

Product data:

| | |
|-------------------------|--|
| Product Type: | Primary Antibodies |
| Applications: | WB |
| Recommended Dilution: | Peptide ELISA: 1/1000. Western blot: 1/1000. |
| Reactivity: | Human |
| Host: | Rabbit |
| Isotype: | Ig |
| Clonality: | Polyclonal |
| Immunogen: | KLH conjugated synthetic peptide between 178-206 amino acids from the Central region of Human CLEC12A. |
| Specificity: | This antibody reacts to CLEC12A. |
| Formulation: | PBS State: Aff - Purified State: Liquid purified Ig fraction Preservative: 0.09% (W/V) sodium azide |
| Concentration: | lot specific |
| Purification: | Affinity chromatography on Protein A |
| Conjugation: | Unconjugated |
| Storage: | Store undiluted at 2-8°C for one month or (in aliquots) at -20°C for longer. Avoid repeated freezing and thawing. |
| Stability: | Shelf life: one year from despatch. |
| Predicted Protein Size: | 30762 Da |
| Gene Name: | C-type lectin domain family 12 member A |
| Database Link: | Entrez Gene 160364 Human Q5QGZ9 |
| Synonyms: | CLL1, DCAL2, MICL |
| Protein Families: | Druggable Genome, Transmembrane |



[View online »](#)

Product images:

CLEC12A Antibody (Center) western blot analysis in ZR-75-1 cell line lysates (35ug/lane). This demonstrates the CLEC12A antibody detected the CLEC12A protein (arrow).