

Product datasheet for **AP50956PU-N**

SCGF (CLEC11A) (Center) Rabbit Polyclonal Antibody

Product data:

Product Type:	Primary Antibodies
Applications:	FC, IHC, WB
Recommended Dilution:	ELISA: 1/1000. Western blot: 1/100 - 1/500. Immunohistochemistry on paraffin sections: 1/50 - 1/100. Flow Cytometry: 1/10 - 1/50.
Reactivity:	Human
Host:	Rabbit
Isotype:	Ig
Clonality:	Polyclonal
Immunogen:	KLH conjugated synthetic peptide between 152-181 amino acids from the Central region of human CLEC11A
Specificity:	This antibody reacts to CLEC11A.
Formulation:	PBS State: Aff - Purified State: Liquid purified Ig fraction Preservative: 0.09% (W/V) sodium azide
Concentration:	lot specific
Purification:	Affinity chromatography on Protein A
Conjugation:	Unconjugated
Storage:	Store undiluted at 2-8°C for one month or (in aliquots) at -20°C for longer. Avoid repeated freezing and thawing.
Stability:	Shelf life: one year from despatch.
Predicted Protein Size:	35695 Da
Gene Name:	Homo sapiens C-type lectin domain family 11 member A (CLEC11A)
Database Link:	Entrez Gene 6320 Human Q9Y240



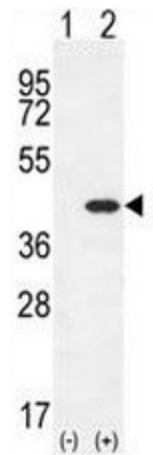
[View online »](#)

Background: This gene encodes a member of the C-type lectin superfamily. The encoded protein is a secreted sulfated glycoprotein and functions as a growth factor for primitive hematopoietic progenitor cells. An alternative splice variant has been described but its biological nature has not been determined.

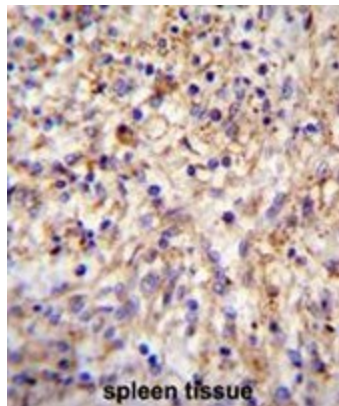
Synonyms: Stem cell growth factor, CLECSF3, LSLCL

Protein Families: Druggable Genome, Secreted Protein

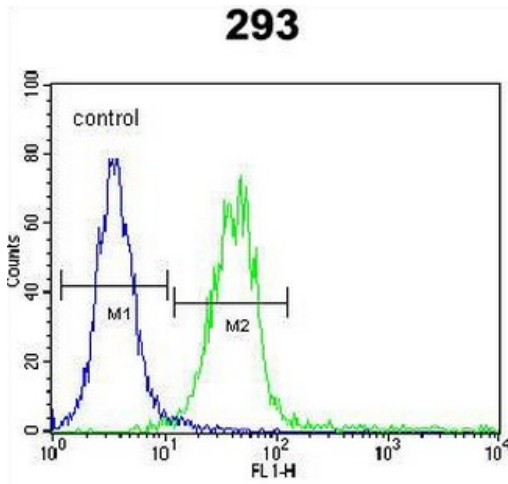
Product images:



Western blot analysis of CLEC11A (arrow) using rabbit polyclonal CLEC11A Antibody (Center). 293 cell lysates (2 ug/lane) either nontransfected (Lane 1) or transiently transfected (Lane 2) with the CLEC11A gene.



CLEC11A Antibody (Center) immunohistochemistry analysis in formalin fixed and paraffin embedded human spleen tissue followed by peroxidase conjugation of the secondary antibody and DAB staining. This data demonstrates the use of CLEC11A Antibody (Center) for immunohistochemistry. Clinical relevance has not been evaluated.



CLEC11A Antibody (Center) flow cytometric analysis of 293 cells (right histogram) compared to a negative control cell (left histogram). FITC-conjugated goat-anti-rabbit secondary antibodies were used for the analysis.