

Product datasheet for **AP50953PU-N**

CLDND1 (Center) Rabbit Polyclonal Antibody

Product data:

Product Type:	Primary Antibodies
Applications:	WB
Recommended Dilution:	ELISA: 1/1000. Western blot: 1/100 - 1/500.
Reactivity:	Human, Mouse
Host:	Rabbit
Isotype:	Ig
Clonality:	Polyclonal
Immunogen:	KLH conjugated synthetic peptide between 50–80 amino acids from the Central region of human CLDND
Specificity:	This antibody reacts to CLDND1.
Formulation:	PBS State: Aff - Purified State: Liquid purified Ig fraction Preservative: 0.09% (W/V) sodium azide
Concentration:	lot specific
Purification:	Affinity chromatography on Protein A
Conjugation:	Unconjugated
Storage:	Store undiluted at 2-8°C for one month or (in aliquots) at -20°C for longer. Avoid repeated freezing and thawing.
Stability:	Shelf life: one year from despatch.
Predicted Protein Size:	28603 Da
Gene Name:	claudin domain containing 1
Database Link:	Entrez Gene 224250 Mouse Entrez Gene 56650 Human Q9NY35



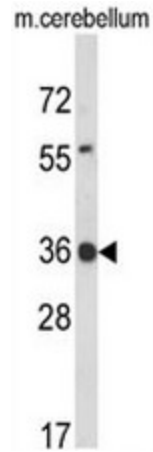
[View online »](#)

Background: CLDND1 is widely distributed in the adult CNS with highest expression in the corpus callosum, caudate nucleus, cerebral cortex, medulla, putamen, spinal cord, substantia nigra and subthalamic nucleus. Weak expression has been detected in the adult heart. There are 2 named isoforms produced by alternative splicing.

Synonyms: GENX-3745, C3orf4, HSPC174, PSEC0054, UNQ2511, PRO6000

Protein Families: Transmembrane

Product images:



Western blot analysis of CLDND1 Antibody (Center) in mouse cerebellum tissue lysates (35ug/lane). CLDND1 (arrow) was detected using the purified Pab.