

Product datasheet for **AP50952PU-N**

Claudin 8 (CLDN8) (Center) Rabbit Polyclonal Antibody

Product data:

Product Type:	Primary Antibodies
Applications:	FC, WB
Recommended Dilution:	ELISA: 1/1000. Western blot: 1/100 - 1/500. Flow Cytometry: 1/10 - 1/50.
Reactivity:	Human
Host:	Rabbit
Isotype:	Ig
Clonality:	Polyclonal
Immunogen:	KLH conjugated synthetic peptide between 146~175 amino acids from the Center region of human CLDN8
Specificity:	This antibody reacts to CLDN8.
Formulation:	PBS State: Aff - Purified State: Liquid purified Ig fraction Preservative: 0.09% (W/V) sodium azide
Concentration:	lot specific
Purification:	Affinity chromatography on Protein A
Conjugation:	Unconjugated
Storage:	Store undiluted at 2-8°C for one month or (in aliquots) at -20°C for longer. Avoid repeated freezing and thawing.
Stability:	Shelf life: one year from despatch.
Predicted Protein Size:	24845 Da
Gene Name:	claudin 8
Database Link:	Entrez Gene 9073 Human P56748



[View online »](#)

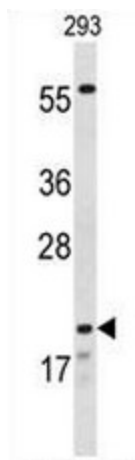
Background: CLDN8 is components of epithelial cell tight junctions. Tight junctions regulate movement of solutes and ions through the paracellular space and prevent mixing of proteins and lipids in the outer leaflet of the apical and basolateral plasma membrane domains.

Synonyms: UNQ779, PRO1573

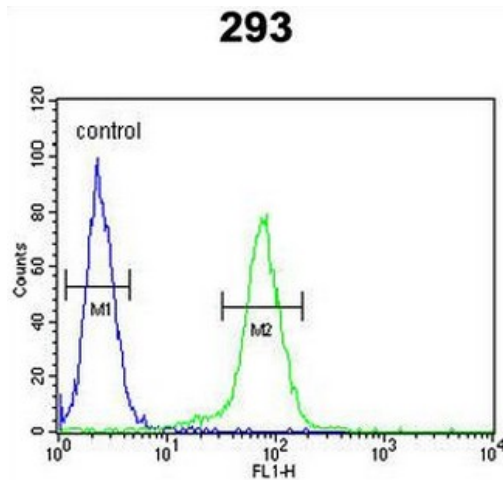
Protein Families: Transmembrane

Protein Pathways: Cell adhesion molecules (CAMs), Leukocyte transendothelial migration, Tight junction

Product images:



Western blot analysis of CLDN8 Antibody (Center) in 293 cell line lysates (35ug/lane). CLDN8 (arrow) was detected using the purified Pab.



CLDN8 Antibody (Center) flow cytometric analysis of 293 cells (right histogram) compared to a negative control cell (left histogram).FITC-conjugated goat-anti-rabbit secondary antibodies were used for the analysis.