

Product datasheet for **AP50951PU-N**

Claudin 7 (CLDN7) (C-term) Rabbit Polyclonal Antibody

Product data:

Product Type:	Primary Antibodies
Applications:	FC, IHC, WB
Recommended Dilution:	ELISA: 1/1000. Western blot: 1/1000. Immunohistochemistry on paraffin sections: 1/50 - 1/100. Flow Cytometry: 1/10 - 1/50.
Reactivity:	Human
Host:	Rabbit
Isotype:	Ig
Clonality:	Polyclonal
Immunogen:	KLH conjugated synthetic peptide between 172-201 amino acids from the C-terminal region of human CLDN7
Specificity:	This antibody reacts to CLDN7.
Formulation:	PBS State: Aff - Purified State: Liquid purified Ig fraction Preservative: 0.09% (W/V) sodium azide
Concentration:	lot specific
Purification:	Affinity chromatography on Protein A
Conjugation:	Unconjugated
Storage:	Store undiluted at 2-8°C for one month or (in aliquots) at -20°C for longer. Avoid repeated freezing and thawing.
Stability:	Shelf life: one year from despatch.
Predicted Protein Size:	22418 Da
Gene Name:	claudin 7
Database Link:	Entrez Gene 1366 Human O95471



[View online »](#)

Background:

This gene encodes a member of the claudin family. Claudins are integral membrane proteins and components of tight junction strands. Tight junction strands serve as a physical barrier to prevent solutes and water from passing freely through the paracellular space between epithelial or endothelial cell sheets, and also play critical roles in maintaining cell polarity and signal transductions. Differential expression of this gene has been observed in different types of malignancies, including breast cancer, ovarian cancer, hepatocellular carcinomas, urinary tumors, prostate cancer, lung cancer, head and neck cancers, thyroid carcinomas, etc.. Alternatively spliced transcript variants encoding different isoforms have been found.

Synonyms:

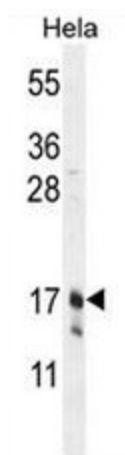
CLDN-7, CEPTRL2, CPETRL2

Protein Families:

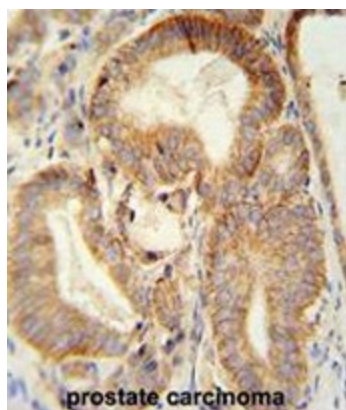
Transmembrane

Protein Pathways:

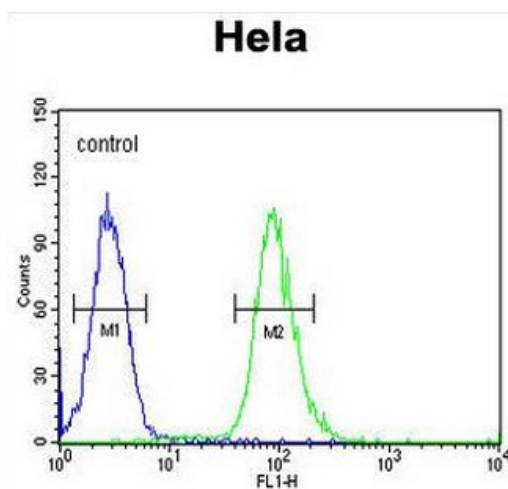
Cell adhesion molecules (CAMs), Leukocyte transendothelial migration, Tight junction

Product images:


CLDN7 Antibody (C-term) western blot analysis in HeLa cell line lysates (35ug/lane). This demonstrates the CLDN7 antibody detected the CLDN7 protein (arrow).



CLDN7 antibody (C-term) (#AP10180b) immunohistochemistry analysis in formalin fixed and paraffin embedded human prostate carcinoma followed by peroxidase conjugation of the secondary antibody and DAB staining. This data demonstrates the use of the CLDN7 antibody (C-term) for immunohistochemistry. Clinical relevance has not been evaluated.



CLDN7 Antibody (C-term) flow cytometric analysis of Hela cells (right histogram) compared to a negative control cell (left histogram). FITC-conjugated goat-anti-rabbit secondary antibodies were used for the analysis.