

Product datasheet for **AP50949PU-N**

Claudin 4 (CLDN4) (C-term) Rabbit Polyclonal Antibody

Product data:

Product Type:	Primary Antibodies
Applications:	WB
Recommended Dilution:	ELISA: 1/1000. Western blot: 1/100 - 1/500.
Reactivity:	Human, Mouse
Host:	Rabbit
Isotype:	Ig
Clonality:	Polyclonal
Immunogen:	KLH conjugated synthetic peptide between 177~206 amino acids from the C-terminal region of human CLDN4
Specificity:	This antibody reacts to CLDN4.
Formulation:	PBS State: Aff - Purified State: Liquid purified Ig fraction Preservative: 0.09% (W/V) sodium azide
Concentration:	lot specific
Purification:	Affinity chromatography on Protein A
Conjugation:	Unconjugated
Storage:	Store undiluted at 2-8°C for one month or (in aliquots) at -20°C for longer. Avoid repeated freezing and thawing.
Stability:	Shelf life: one year from despatch.
Predicted Protein Size:	22077 Da
Gene Name:	claudin 4
Database Link:	Entrez Gene 12740 Mouse Entrez Gene 1364 Human O14493
Background:	CLDN4 is an integral membrane protein, which belongs to the claudin family. The protein is a component of tight junction strands and may play a role in internal organ development and function during pre- and postnatal life.



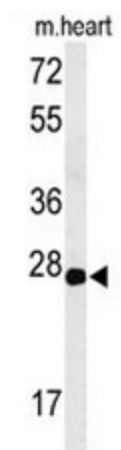
[View online »](#)

Synonyms: CPER, CPETR1, CPE-R, WBSCR8, CPE-Receptor

Protein Families: Druggable Genome, Transmembrane

Protein Pathways: Cell adhesion molecules (CAMs), Leukocyte transendothelial migration, Tight junction

Product images:



Western blot analysis of CLDN4 Antibody (C-term) in mouse heart tissue lysates (35ug/lane). CLDN4 (arrow) was detected using the purified Pab.