

Product datasheet for **AP50948PU-N**

Claudin 23 (CLDN23) (C-term) Rabbit Polyclonal Antibody

Product data:

Product Type:	Primary Antibodies
Applications:	IHC, WB
Recommended Dilution:	ELISA: 1/1000. Western blot: 1/100 - 1/500. Immunohistochemistry on paraffin sections: 1/50 - 1/100.
Reactivity:	Human, Mouse
Host:	Rabbit
Isotype:	Ig
Clonality:	Polyclonal
Immunogen:	KLH conjugated synthetic peptide between 235~265 amino acids from the C-terminal region of human CLDN23
Specificity:	This antibody reacts to CLDN23.
Formulation:	PBS State: Aff - Purified State: Liquid purified Ig fraction Preservative: 0.09% (W/V) sodium azide
Concentration:	lot specific
Purification:	Affinity chromatography on Protein A
Conjugation:	Unconjugated
Storage:	Store undiluted at 2-8°C for one month or (in aliquots) at -20°C for longer. Avoid repeated freezing and thawing.
Stability:	Shelf life: one year from despatch.
Predicted Protein Size:	31915 Da
Gene Name:	claudin 23
Database Link:	Entrez Gene 71908 Mouse Entrez Gene 137075 Human Q96B33
Background:	CLDN23 is a four-transmembrane protein with WWCC motif, defined by W-X(17-22)-W-X(2)-C-X(8-10)-C. It is a candidate tumor suppressor gene implicated in intestinal-type gastric cancer.

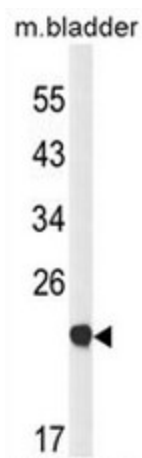


[View online »](#)

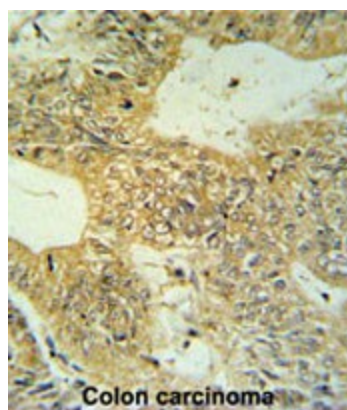
Synonyms: 2310014B08Rik; CLDNL; hCG1646163

Protein Pathways: Cell adhesion molecules (CAMs), Leukocyte transendothelial migration, Tight junction

Product images:



Western blot analysis of CLDN23 Antibody (C-term) in mouse bladder tissue lysates (35ug/lane). CLDN23 (arrow) was detected using the purified Pab.



CLDN23 Antibody (C-term) IHC analysis in formalin fixed and paraffin embedded colon carcinoma followed by peroxidase conjugation of the secondary antibody and DAB staining. This data demonstrates the use of the CLDN23 Antibody (C-term) for immunohistochemistry. Clinical relevance has not been evaluated.