

Product datasheet for **AP50947PU-N**

Claudin 22 (CLDN22) (Center) Rabbit Polyclonal Antibody

Product data:

Product Type:	Primary Antibodies
Applications:	FC, WB
Recommended Dilution:	ELISA: 1/1000. Western blot: 1/100-1/500. Flow Cytometry: 1/10-1/50.
Reactivity:	Human, Mouse
Host:	Rabbit
Isotype:	Ig
Clonality:	Polyclonal
Immunogen:	KLH conjugated synthetic peptide between 97-126 amino acids from the Central region of human CLDN22
Specificity:	This antibody recognizes CLDN22 (Center).
Formulation:	PBS State: Aff - Purified State: Liquid purified Ig fraction Preservative: 0.09% (W/V) Sodium Azide
Concentration:	lot specific
Purification:	Protein A column, followed by peptide affinity purification
Conjugation:	Unconjugated
Storage:	Store undiluted at 2-8°C for one month or (in aliquots) at -20°C for longer. Avoid repeated freezing and thawing.
Stability:	Shelf life: one year from despatch.
Predicted Protein Size:	24509 Da
Gene Name:	claudin 22
Database Link:	Entrez Gene 53842 Human Q8N7P3



[View online »](#)

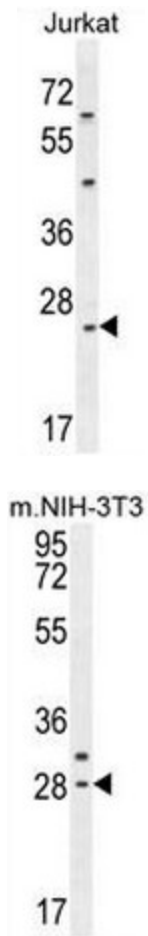
Background: This gene encodes a member of the claudin family. Claudins are integral membrane proteins and components of tight junction strands. Tight junction strands serve as a physical barrier to prevent solutes and water from passing freely through the paracellular space between epithelial or endothelial cell sheets, and also play critical roles in maintaining cell polarity and signal transductions. This gene is intronless and overlaps the 3' UTR of the WWC2 gene (GeneID: 80014) on the opposite strand.

Synonyms: Claudin-22

Protein Families: Transmembrane

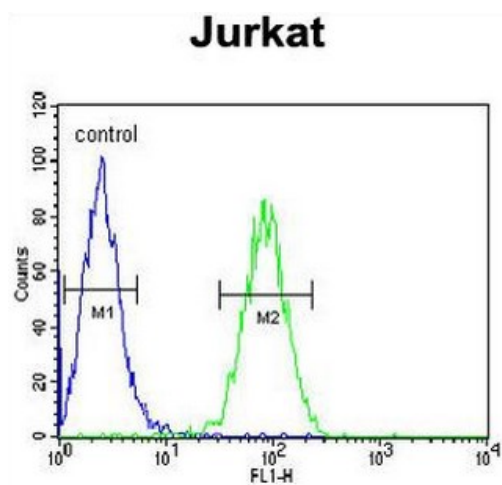
Protein Pathways: Cell adhesion molecules (CAMs), Leukocyte transendothelial migration, Tight junction

Product images:



CLDN22 Antibody (Center) western blot analysis in Jurkat cell line lysates (35ug/lane). This demonstrates the CLDN22 antibody detected the CLDN22 protein (arrow).

CLDN22 Antibody (Center) western blot analysis in mouse NIH-3T3 cell line lysates (35ug/lane). This demonstrates the CLDN22 antibody detected the CLDN22 protein (arrow).



CLDN22 Antibody (Center) flow cytometric analysis of Jurkat cells (right histogram) compared to a negative control cell (left histogram). FITC-conjugated goat-anti-rabbit secondary antibodies were used for the analysis.