

## Product datasheet for **AP50945PU-N**

### Claudin 2 (CLDN2) (C-term Y195) Rabbit Polyclonal Antibody

#### Product data:

Product Type:	Primary Antibodies
Applications:	IHC, WB
Recommended Dilution:	<b>ELISA:</b> 1/1000. <b>Western blot:</b> 1/100 - 1/500. <b>Immunohistochemistry on paraffin sections:</b> 1/10 - 1/50.
Reactivity:	Human
Host:	Rabbit
Isotype:	Ig
Clonality:	Polyclonal
Immunogen:	KLH conjugated synthetic peptide between 181-209 amino acids from the C-terminal region of human CLDN2
Specificity:	This antibody reacts to CLDN2.
Formulation:	PBS State: Aff - Purified State: Liquid purified Ig fraction Preservative: 0.09% (W/V) sodium azide
Concentration:	lot specific
Purification:	Affinity chromatography on Protein A
Conjugation:	Unconjugated
Storage:	Store undiluted at 2-8°C for one month or (in aliquots) at -20°C for longer. Avoid repeated freezing and thawing.
Stability:	Shelf life: one year from despatch.
Predicted Protein Size:	24549 Da
Gene Name:	claudin 2
Database Link:	<a href="#">Entrez Gene 9075 Human P57739</a>



[View online »](#)

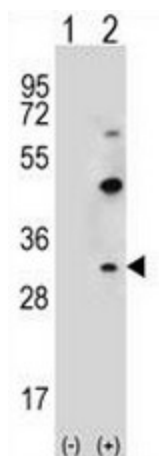
**Background:** This gene product belongs to the claudin protein family whose members have been identified as major integral membrane proteins localized exclusively at tight junctions. Claudins are expressed in an organ-specific manner and regulate tissue-specific physiologic properties of tight junctions. This protein is expressed in the intestine. Alternatively spliced transcript variants with different 5' untranslated region have been found for this gene.

**Synonyms:** SP82, CLD2

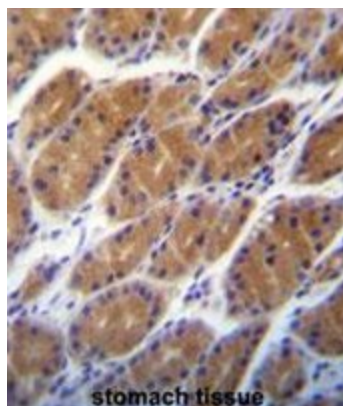
**Protein Families:** Transmembrane

**Protein Pathways:** Cell adhesion molecules (CAMs), Leukocyte transendothelial migration, Tight junction

**Product images:**



Western blot analysis of CLDN2 (arrow) using rabbit polyclonal CLDN2 Antibody (pTyr195). 293 cell lysates (2 ug/lane) either nontransfected (Lane 1) or transiently transfected (Lane 2) with the CLDN2 gene.



CLDN2 Antibody (C-term pTyr195) immunohistochemistry analysis in formalin fixed and paraffin embedded human stomach tissue followed by peroxidase conjugation of the secondary antibody and DAB staining. This data demonstrates the use of CLDN2 Antibody (C-term pTyr195) for immunohistochemistry. Clinical relevance has not been evaluated.