

Product datasheet for **AP50942PU-N**

Claudin 15 (CLDN15) (Center) Rabbit Polyclonal Antibody

Product data:

Product Type:	Primary Antibodies
Applications:	FC, WB
Recommended Dilution:	ELISA: 1/1000. Western blot: 1/100 - 1/500. Flow cytometric: 1/10 - 1/50.
Reactivity:	Human
Host:	Rabbit
Isotype:	Ig
Clonality:	Polyclonal
Immunogen:	KLH conjugated synthetic peptide between 135~165 amino acids from the Central region of human CLDN15
Specificity:	This antibody reacts to CLDN15.
Formulation:	PBS State: Aff - Purified State: Liquid purified Ig fraction Preservative: 0.09% (W/V) sodium azide
Concentration:	lot specific
Purification:	Affinity chromatography on Protein A
Conjugation:	Unconjugated
Storage:	Store undiluted at 2-8°C for one month or (in aliquots) at -20°C for longer. Avoid repeated freezing and thawing.
Stability:	Shelf life: one year from despatch.
Predicted Protein Size:	24356 Da
Gene Name:	claudin 15
Database Link:	Entrez Gene 24146 Human P56746
Background:	Plays a major role in tight junction specific obliteration of the intercellular space, through calcium independent cell adhesion activity.



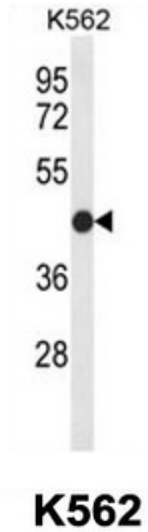
[View online »](#)

Synonyms: FLJ42715; MGC19536; OTTHUMP00000197704

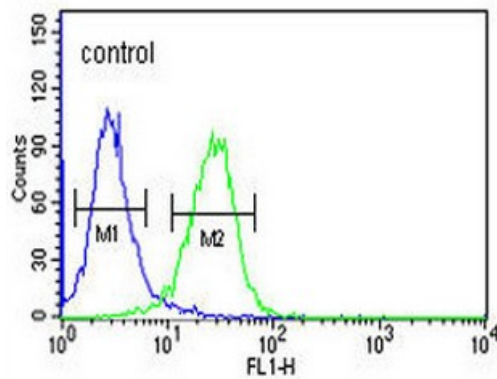
Protein Families: Transmembrane

Protein Pathways: Cell adhesion molecules (CAMs), Leukocyte transendothelial migration, Tight junction

Product images:



Western blot analysis of CLDN15 Antibody (Center) in K562 cell line lysates (35ug/lane). CLDN15 (arrow) was detected using the purified Pab.



CLDN15 Antibody (Center) flow cytometric analysis of K562 cells (right histogram) compared to a negative control cell (left histogram). FITC-conjugated goat-anti-rabbit secondary antibodies were used for the analysis.