

Product datasheet for **AP50941PU-N**

CLCNKB (N-term) Rabbit Polyclonal Antibody

Product data:

Product Type:	Primary Antibodies
Applications:	WB
Recommended Dilution:	ELISA: 1/1000. Western blot: 1/100 - 1/500.
Reactivity:	Human, Mouse
Host:	Rabbit
Isotype:	Ig
Clonality:	Polyclonal
Immunogen:	KLH conjugated synthetic peptide between 10-40 amino acids from the N-terminal region of human CLCNKB
Specificity:	This antibody reacts to CLCNKB.
Formulation:	PBS State: Aff - Purified State: Liquid purified Ig fraction Preservative: 0.09% (W/V) sodium azide
Concentration:	lot specific
Purification:	Affinity chromatography on Protein A
Conjugation:	Unconjugated
Storage:	Store undiluted at 2-8°C for one month or (in aliquots) at -20°C for longer. Avoid repeated freezing and thawing.
Stability:	Shelf life: one year from despatch.
Predicted Protein Size:	75446 Da
Gene Name:	chloride voltage-gated channel Kb
Database Link:	Entrez Gene 56365 Mouse Entrez Gene 1188 Human P51801



[View online »](#)

Background:

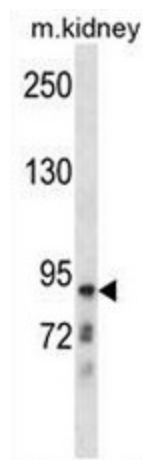
The protein encoded by this gene is a member of the family of voltage-gated chloride channels. Chloride channels have several functions, including the regulation of cell volume, membrane potential stabilization, signal transduction and transepithelial transport. This gene is expressed predominantly in the kidney and may be important for renal salt reabsorption. Mutations in this gene are associated with autosomal recessive Bartter syndrome type 3 (BS3). Alternatively spliced transcript variants encoding different isoforms have been found for this gene. [provided by RefSeq].

Synonyms:

Chloride channel protein ClC-Kb, Chloride channel Kb, ClC-K2, ClCK2

Protein Families:

Druggable Genome, Transmembrane

Product images:

CLCNKB Antibody (N-term) western blot analysis in mouse kidney tissue lysates (35ug/lane). This demonstrates the CLCNKB antibody detected the CLCNKB protein (arrow).