

Product datasheet for **AP50939PU-N**

CLCN2 (N-term) Rabbit Polyclonal Antibody

Product data:

| | |
|-------------------------|--|
| Product Type: | Primary Antibodies |
| Applications: | WB |
| Recommended Dilution: | Peptide ELISA: 1/1,000. Western blot: 1/1,000. |
| Reactivity: | Human, Mouse |
| Host: | Rabbit |
| Isotype: | Ig |
| Clonality: | Polyclonal |
| Immunogen: | KLH conjugated synthetic peptide between 209-237 amino acids from the N-terminal region of Human CLCN2. |
| Specificity: | This antibody recognizes CLCN2. |
| Formulation: | PBS State: Aff - Purified State: Liquid purified Ig fraction Preservative: 0.09% (W/V) Sodium Azide |
| Concentration: | lot specific |
| Purification: | Affinity Chromatography on Protein A |
| Conjugation: | Unconjugated |
| Storage: | Store undiluted at 2-8°C for one month or (in aliquots) at -20°C for longer. Avoid repeated freezing and thawing. |
| Stability: | Shelf life: one year from despatch. |
| Predicted Protein Size: | 98535 Da |
| Gene Name: | chloride voltage-gated channel 2 |
| Database Link: | Entrez Gene 12724 Mouse Entrez Gene 1181 Human P51788 |



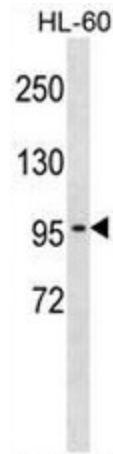
[View online »](#)

Background: The transmembrane protein encoded by this gene is a voltage-gated chloride channel that maintains chloride ion homeostasis in various cells. Defects in this gene may be a cause of certain epilepsies. Four transcript variants encoding different isoforms have been found for this gene.

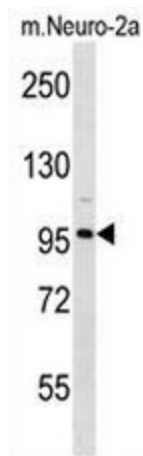
Synonyms: Chloride channel protein 2, CLC3, CIC-2, CIC2

Protein Families: Druggable Genome, Ion Channels: Other, Transmembrane

Product images:



CLCN2 Antibody (N-term) western blot analysis in HL-60 cell line lysates (35ug/lane). This demonstrates the CLCN2 antibody detected the CLCN2 protein (arrow).



CLCN2 Antibody (N-term) western blot analysis in mouse Neuro-2a cell line lysates (35ug/lane). This demonstrates the CLCN2 antibody detected the CLCN2 protein (arrow).