

## Product datasheet for **AP50938PU-N**

### Galectin 10 (CLC) (C-term) Rabbit Polyclonal Antibody

#### Product data:

Product Type:	Primary Antibodies
Applications:	WB
Recommended Dilution:	<b>ELISA:</b> 1/1000. <b>Western blot:</b> 1/100 - 1/500.
Reactivity:	Human
Host:	Rabbit
Isotype:	Ig
Clonality:	Polyclonal
Immunogen:	KLH conjugated synthetic peptide between 90-119 amino acids from the C-terminal region of human CLC
Specificity:	This antibody reacts to CLC.
Formulation:	PBS State: Aff - Purified State: Liquid purified Ig fraction Preservative: 0.09% (W/V) sodium azide
Concentration:	lot specific
Purification:	Affinity chromatography on Protein A
Conjugation:	Unconjugated
Storage:	Store undiluted at 2-8°C for one month or (in aliquots) at -20°C for longer. Avoid repeated freezing and thawing.
Stability:	Shelf life: one year from despatch.
Predicted Protein Size:	16481 Da
Gene Name:	Charcot-Leyden crystal galectin
Database Link:	<a href="#">Entrez Gene 1178 Human Q05315</a>



[View online »](#)

**Background:**

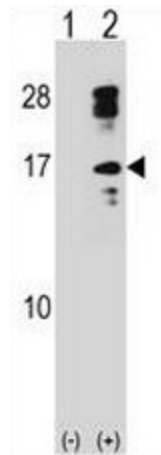
Lysophospholipases are enzymes that act on biological membranes to regulate the multifunctional lysophospholipids. The protein encoded by this gene is a lysophospholipase expressed in eosinophils and basophils. It hydrolyzes lysophosphatidylcholine to glycerophosphocholine and a free fatty acid. This protein may possess carbohydrate or IgE-binding activities. It is both structurally and functionally related to the galectin family of beta-galactoside binding proteins. It may be associated with inflammation and some myeloid leukemias.

**Synonyms:**

CLC, Eosinophil lysophospholipase, EC=3.1.1.5, Charcot-Leyden crystal protein, Lysolecithin acylhydrolase, CLC, Galectin10, LGALS10

**Protein Families:**

Secreted Protein

**Product images:**

Western blot analysis of CLC (arrow) using rabbit polyclonal CLC Antibody (C-term). 293 cell lysates (2 ug/lane) either nontransfected (Lane 1) or transiently transfected (Lane 2) with the CLC gene.