

Product datasheet for **AP50937PU-N**

CLASP2 Rabbit Polyclonal Antibody

Product data:

Product Type:	Primary Antibodies
Applications:	FC, WB
Recommended Dilution:	ELISA: 1/1000. Western blot: 1/100 - 1/500. Flow cytometry: 1/10 - 1/50.
Reactivity:	Human, Mouse
Host:	Rabbit
Isotype:	Ig
Clonality:	Polyclonal
Immunogen:	KLH conjugated synthetic peptide between 1005~1034 amino acids from the Y1019 region of human CLASP2
Specificity:	This antibody reacts to CLASP2.
Formulation:	PBS State: Aff - Purified State: Liquid purified Ig fraction Preservative: 0.09% (W/V) sodium azide
Concentration:	lot specific
Purification:	Affinity chromatography on Protein A
Conjugation:	Unconjugated
Storage:	Store undiluted at 2-8°C for one month or (in aliquots) at -20°C for longer. Avoid repeated freezing and thawing.
Stability:	Shelf life: one year from despatch.
Predicted Protein Size:	141133 Da
Gene Name:	cytoplasmic linker associated protein 2
Database Link:	Entrez Gene 23122 Human O75122



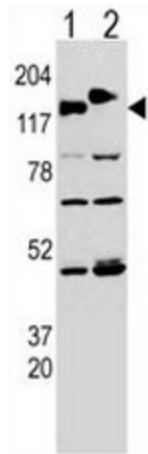
[View online »](#)

Background:

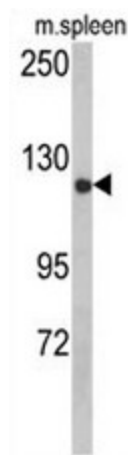
CLASP2 is microtubule plus-end tracking protein that promotes the stabilization of dynamic microtubules. Required for the polarization of the cytoplasmic microtubule arrays in migrating cells towards the leading edge of the cell. May act at the cell cortex to enhance the frequency of rescue of depolymerizing microtubules by attaching their plus-ends to cortical platforms composed of ERC1 and PHLDB2. This cortical microtubule stabilizing activity is regulated at least in part by phosphatidylinositol 3-kinase signaling. Also performs a similar stabilizing function at the kinetochore which is essential for the bipolar alignment of chromosomes on the mitotic spindle.

Synonyms:

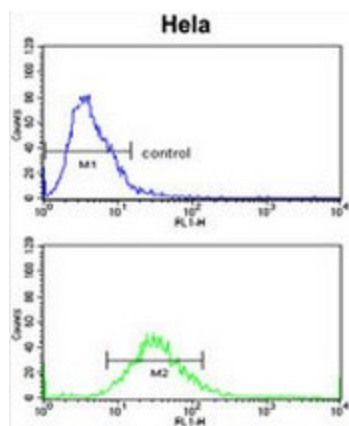
CLIP-associating protein 2, KIAA0627, hOrbit2

Product images:


Western blot analysis of CLASP (arrow) using rabbit polyclonal CLASP Antibody (pTyr1019) (Cat. #AP50937PU-N). 293 cell lysates transfected with the ACADL gene (Lane 1) and with the GFP-CLASP (Lane 2).



Western blot analysis of CLASP2 Antibody (pTyr1019) (Cat. #AP50937PU-N) in mouse spleen tissue lysates (35g/lane). CLASP2 (arrow) was detected using the purified Pab.



CLASP2 Antibody (pTyr1019) (Cat. #AP50937PU-N) flow cytometric analysis of HeLa cells (bottom histogram) compared to a negative control cell (top histogram). FITC-conjugated goat-anti-rabbit secondary antibodies were used for the analysis.