

Product datasheet for **AP50936PU-N**

RITA (RITA1) (N-term) Rabbit Polyclonal Antibody

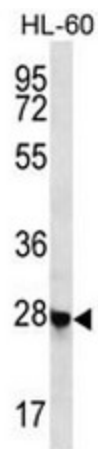
Product data:

Product Type:	Primary Antibodies
Applications:	WB
Recommended Dilution:	ELISA: 1/1000. Western blot: 1/100 - 1/500.
Reactivity:	Human
Host:	Rabbit
Isotype:	Ig
Clonality:	Polyclonal
Immunogen:	KLH conjugated synthetic peptide between 43-72 amino acids from the N-terminal region of human CL052
Specificity:	This antibody reacts to CL052.
Formulation:	PBS State: Aff - Purified State: Liquid purified Ig fraction Preservative: 0.09% (W/V) sodium azide
Concentration:	lot specific
Purification:	Affinity chromatography on Protein A
Conjugation:	Unconjugated
Storage:	Store undiluted at 2-8°C for one month or (in aliquots) at -20°C for longer. Avoid repeated freezing and thawing.
Stability:	Shelf life: one year from despatch.
Predicted Protein Size:	28619 Da
Gene Name:	RBPJ interacting and tubulin associated 1
Database Link:	Entrez Gene 84934 Human Q96K30
Synonyms:	C12orf52, Uncharacterized protein C12orf52



[View online »](#)

Product images:



CL052 Antibody (N-term) western blot analysis in HL-60 cell line lysates (35ug/lane). This demonstrates the CL052 antibody detected the CL052 protein (arrow).