

Product datasheet for **AP50933PU-N**

C11orf73 (HIKESHI) (N-term) Rabbit Polyclonal Antibody

Product data:

Product Type:	Primary Antibodies
Applications:	FC, IHC, WB
Recommended Dilution:	ELISA: 1/1000. Western blot: 1/100 - 1/500. Immunohistochemistry on paraffin sections: 1/50 - 1/100. Flow Cytometry: 1/10 - 1/50.
Reactivity:	Hamster, Human
Host:	Rabbit
Isotype:	Ig
Clonality:	Polyclonal
Immunogen:	KLH conjugated synthetic peptide between 9-39 amino acids from the N-terminal region of human CK073
Specificity:	This antibody reacts to CK073.
Formulation:	PBS State: Aff - Purified State: Liquid purified Ig fraction Preservative: 0.09% (W/V) sodium azide
Concentration:	lot specific
Purification:	Affinity chromatography on Protein A
Conjugation:	Unconjugated
Storage:	Store undiluted at 2-8°C for one month or (in aliquots) at -20°C for longer. Avoid repeated freezing and thawing.
Stability:	Shelf life: one year from despatch.
Predicted Protein Size:	21628 Da
Gene Name:	chromosome 11 open reading frame 73
Database Link:	Entrez Gene 51501 Human Q53FT3

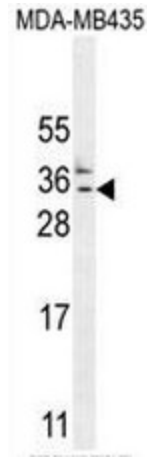


[View online »](#)

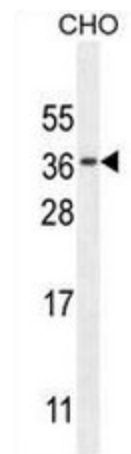
Background: Required for organization and/or function of the secretory apparatus in Clara cells in lung (By similarity).

Synonyms: HSPC138, HSPC179, HSPC248

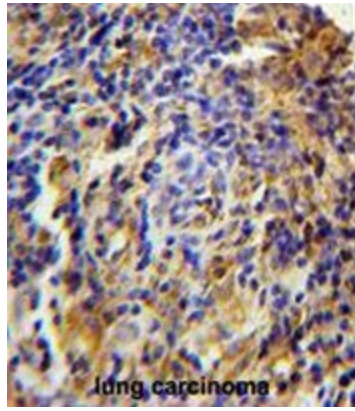
Product images:



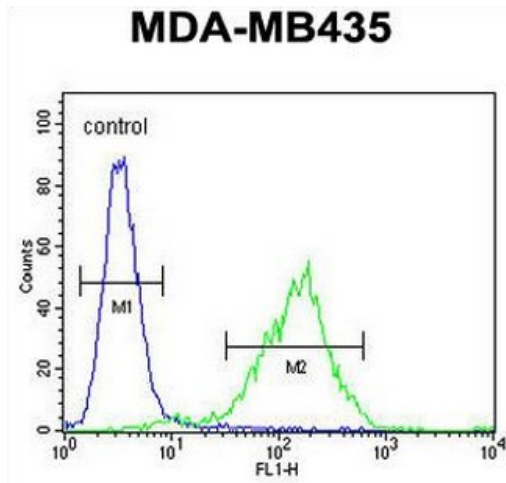
CK073 Antibody (N-term) western blot analysis in MDA-MB435 cell line lysates (35ug/lane). This demonstrates the CK073 antibody detected the CK073 protein (arrow).



CK073 Antibody (N-term) western blot analysis in CHO cell line lysates (35ug/lane). This demonstrates the CK073 antibody detected the CK073 protein (arrow).



CK073 Antibody (N-term) immunohistochemistry analysis in formalin fixed and paraffin embedded human lung carcinoma followed by peroxidase conjugation of the secondary antibody and DAB staining. This data demonstrates the use of the CK073 Antibody (N-term) for immunohistochemistry. Clinical relevance has not been evaluated.



CK073 Antibody (N-term) flow cytometric analysis of MDA-MB435 cells (right histogram) compared to a negative control cell (left histogram). FITC-conjugated goat-anti-rabbit secondary antibodies were used for the analysis.