

## Product datasheet for **AP50928PU-N**

### CITED2 (C-term) Rabbit Polyclonal Antibody

#### Product data:

Product Type:	Primary Antibodies
Applications:	IF, WB
Recommended Dilution:	<b>ELISA:</b> 1/1000. <b>Western blot:</b> 1/100 - 1/500. <b>Immunofluorescence:</b> 1/10 - 1/50.
Reactivity:	Human, Mouse
Host:	Rabbit
Isotype:	Ig
Clonality:	Polyclonal
Immunogen:	KLH conjugated synthetic peptide between 207-234 amino acids from the C-terminal region of human CITED2
Specificity:	This antibody reacts to CITED2.
Formulation:	PBS State: Aff - Purified State: Liquid purified Ig fraction Preservative: 0.09% (W/V) sodium azide
Concentration:	lot specific
Purification:	Affinity chromatography on Protein A
Conjugation:	Unconjugated
Storage:	Store undiluted at 2-8°C for one month or (in aliquots) at -20°C for longer. Avoid repeated freezing and thawing.
Stability:	Shelf life: one year from despatch.
Predicted Protein Size:	28497 Da
Gene Name:	Cbp/p300 interacting transactivator with Glu/Asp rich carboxy-terminal domain 2
Database Link:	<a href="#">Entrez Gene 17684 Mouse</a> <a href="#">Entrez Gene 10370 Human</a> <a href="#">Q99967</a>



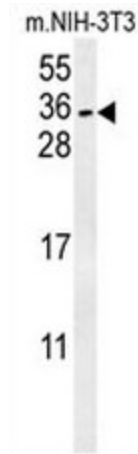
[View online »](#)

**Background:** The protein encoded by this gene inhibits transactivation of HIF1A-induced genes by competing with binding of HIF1a to p300-CH1. Mutations in this gene are a cause of cardiac septal defects. Three transcript variants encoding the same protein have been found for this gene.

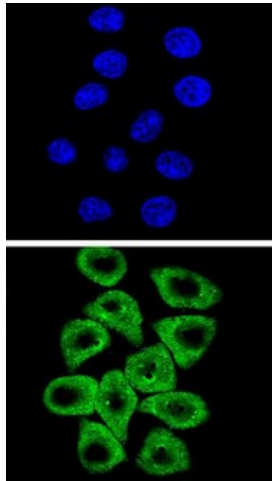
**Synonyms:** MSG-related protein 1, MRG1, P35srj

**Protein Families:** Druggable Genome, Transcription Factors

**Product images:**



CITED2 Antibody (C-term) western blot analysis in mouse NIH-3T3 cell line lysates (15ug/lane). This demonstrates the CITED2 antibody detected CITED2 protein (arrow).



Confocal immunofluorescent analysis of CITED2 Antibody (C-term) with HeLa cell followed by Alexa Fluor® 489-conjugated goat anti-rabbit IgG (green). DAPI was used to stain the cell nuclear (blue).