

Product datasheet for **AP50927PU-N**

Cirhin (UTP4) (N-term) Rabbit Polyclonal Antibody

Product data:

Product Type:	Primary Antibodies
Applications:	FC, IHC, WB
Recommended Dilution:	ELISA: 1/1000. Western blot: 1/100 - 1/500. Immunohistochemistry on paraffin sections: 1/50 - 1/100. Flow Cytometry: 1/10 - 1/50.
Reactivity:	Human
Host:	Rabbit
Isotype:	Ig
Clonality:	Polyclonal
Immunogen:	KLH conjugated synthetic peptide selected from the N-terminal region of human CIRH1A
Specificity:	This antibody reacts to CIRH1A.
Formulation:	PBS State: Aff - Purified State: Liquid purified Ig fraction Preservative: 0.09% (W/V) sodium azide
Concentration:	lot specific
Purification:	Affinity chromatography on Protein A
Conjugation:	Unconjugated
Storage:	Store undiluted at 2-8°C for one month or (in aliquots) at -20°C for longer. Avoid repeated freezing and thawing.
Stability:	Shelf life: one year from despatch.
Predicted Protein Size:	76890 Da
Gene Name:	UTP4, small subunit processome component
Database Link:	Entrez Gene 84916 Human Q969X6



[View online »](#)

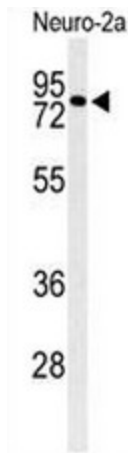
Background:

CIRH1A encodes a WD40-repeat-containing protein that is localized to the nucleolus. Mutation of this gene causes North American Indian childhood cirrhosis, a severe intrahepatic cholestasis that results in transient neonatal jaundice, and progresses to periportal fibrosis and cirrhosis in childhood and adolescence.

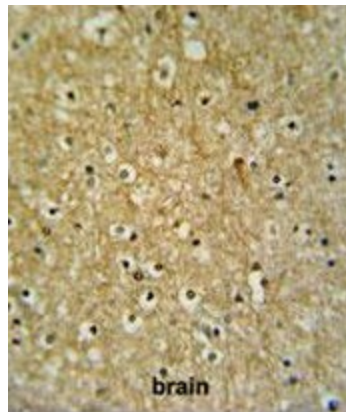
Synonyms:

CIRH1A, KIAA1988

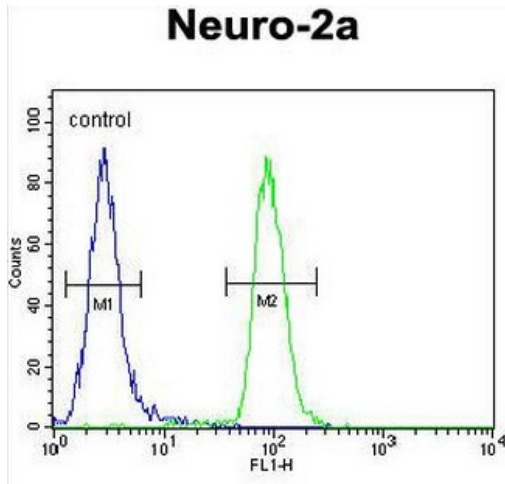
Product images:



Western blot analysis of CIRH1A Antibody (N-term) in Neuro-2a cell line lysates (35ug/lane). CIRH1A (arrow) was detected using the purified Pab.



CIRH1A Antibody (N-term) IHC analysis in formalin fixed and paraffin embedded brain tissue followed by peroxidase conjugation of the secondary antibody and DAB staining. This data demonstrates the use of the CIRH1A Antibody (N-term) for immunohistochemistry. Clinical relevance has not been evaluated.



CIRH1A Antibody (N-term) flow cytometric analysis of Neuro-2a cells (right histogram) compared to a negative control cell (left histogram). FITC-conjugated goat-anti-rabbit secondary antibodies were used for the analysis.