

Product datasheet for **AP50924PU-N**

Capicua (CIC) (N-term) Rabbit Polyclonal Antibody

Product data:

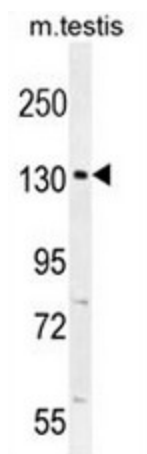
Product Type:	Primary Antibodies
Applications:	IHC, WB
Recommended Dilution:	Western blot: 1/1000. Immunohistochemistry on Paraffin Sections: 1/50-1/100.
Reactivity:	Human, Mouse
Host:	Rabbit
Isotype:	Ig
Clonality:	Polyclonal
Immunogen:	KLH conjugated synthetic peptide between 174-203 amino acids from the N-terminal region of human CIC.
Specificity:	This antibody reacts to CIC.
Formulation:	PBS State: Aff - Purified State: Liquid purified Ig fraction Preservative: 0.09% (W/V) Sodium Azide
Concentration:	lot specific
Purification:	Peptid Affinity Chromatography
Conjugation:	Unconjugated
Storage:	Store undiluted at 2-8°C for one month or (in aliquots) at -20°C for longer. Avoid repeated freezing and thawing.
Stability:	Shelf life: one year from despatch.
Predicted Protein Size:	163820 Da
Gene Name:	capicua transcriptional repressor
Database Link:	Entrez Gene 71722 Mouse Entrez Gene 23152 Human Q96RK0
Background:	Transcriptional repressor which may play a role in development of the central nervous system (CNS).



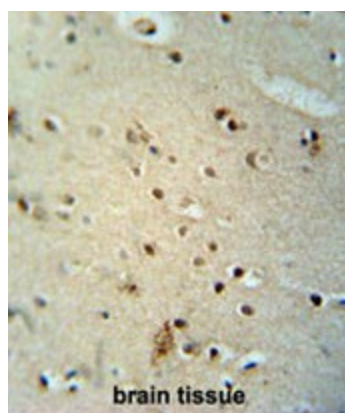
[View online »](#)

Synonyms: Protein capicua homolog, KIAA0306

Product images:



CIC Antibody (N-term) western blot analysis in mouse testis tissue lysates (35ug/lane). This demonstrates the CIC antibody detected the CIC protein (arrow).



CIC antibody (N-term) immunohistochemistry analysis in formalin fixed and paraffin embedded human brain tissue followed by peroxidase conjugation of the secondary antibody and DAB staining. This data demonstrates the use of the CIC antibody (N-term) for immunohistochemistry. Clinical relevance has not been evaluated.