

Product datasheet for **AP50923PU-N**

CIB4 (N-term) Rabbit Polyclonal Antibody

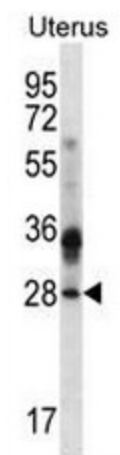
Product data:

Product Type:	Primary Antibodies
Applications:	IHC, WB
Recommended Dilution:	ELISA: 1/1000. Western blot: 1/100 - 1/500. Immunohistochemistry on paraffin sections: 1/10 - 1/50.
Reactivity:	Human, Mouse
Host:	Rabbit
Isotype:	Ig
Clonality:	Polyclonal
Immunogen:	KLH conjugated synthetic peptide between 25-54 amino acids from the N-terminal region of human CIB4
Specificity:	This antibody reacts to CIB4.
Formulation:	PBS State: Aff - Purified State: Liquid purified Ig fraction Preservative: 0.09% (W/V) sodium azide
Concentration:	lot specific
Purification:	Affinity chromatography on Protein A
Conjugation:	Unconjugated
Storage:	Store undiluted at 2-8°C for one month or (in aliquots) at -20°C for longer. Avoid repeated freezing and thawing.
Stability:	Shelf life: one year from despatch.
Predicted Protein Size:	21745 Da
Gene Name:	calcium and integrin binding family member 4
Database Link:	Entrez Gene 130106 Human AOP1X0
Synonyms:	KIP4

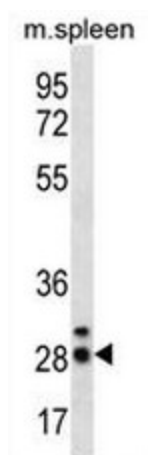


[View online »](#)

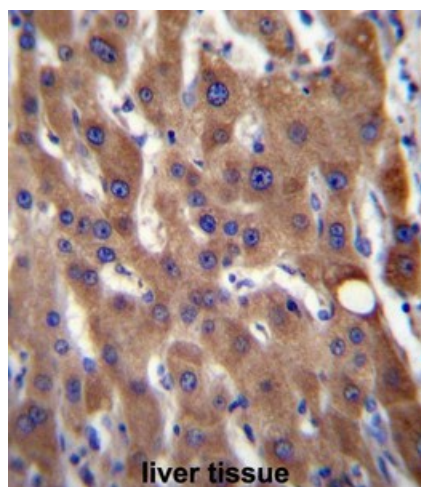
Product images:



CIB4 Antibody (N-term) western blot analysis in human normal Uterus cell line lysates (35ug/lane). This demonstrates the CIB4 antibody detected the CIB4 protein (arrow).



CIB4 Antibody (N-term) western blot analysis in mouse spleen tissue lysates (35ug/lane). This demonstrates the CIB4 antibody detected the CIB4 protein (arrow).



CIB4 Antibody (N-term) immunohistochemistry analysis in formalin fixed and paraffin embedded human liver tissue followed by peroxidase conjugation of the secondary antibody and DAB staining. This data demonstrates the use of CIB4 Antibody (N-term) for immunohistochemistry. Clinical relevance has not been evaluated.