

## Product datasheet for **AP50922PU-N**

### **C9orf150 (LURAP1L) (N-term) Rabbit Polyclonal Antibody**

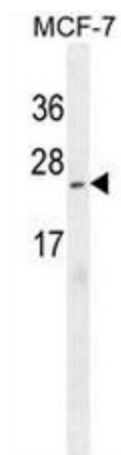
#### Product data:

Product Type:	Primary Antibodies
Applications:	FC, IHC, WB
Recommended Dilution:	<b>ELISA:</b> 1/1000. <b>Western blot:</b> 1/100 - 1/500. <b>Immunohistochemistry on paraffin sections:</b> 1/50 - 1/100. <b>Flow Cytometry:</b> 1/10 - 1/50.
Reactivity:	Human
Host:	Rabbit
Isotype:	Ig
Clonality:	Polyclonal
Immunogen:	KLH conjugated synthetic peptide between 11-40 amino acids from the N-terminal region of human CI150
Specificity:	This antibody reacts to CI150.
Formulation:	PBS State: Aff - Purified State: Liquid purified Ig fraction Preservative: 0.09% (W/V) sodium azide
Concentration:	lot specific
Purification:	Affinity chromatography on Protein A
Conjugation:	Unconjugated
Storage:	Store undiluted at 2-8°C for one month or (in aliquots) at -20°C for longer. Avoid repeated freezing and thawing.
Stability:	Shelf life: one year from despatch.
Predicted Protein Size:	24583 Da
Gene Name:	leucine rich adaptor protein 1 like
Database Link:	<a href="#">Entrez Gene 286343 Human</a> <a href="#">Q8IV03</a>
Synonyms:	Uncharacterized protein C9orf150,C9orf150

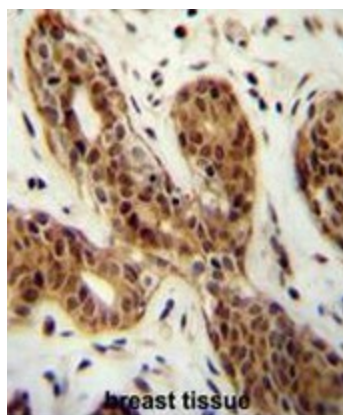


[View online »](#)

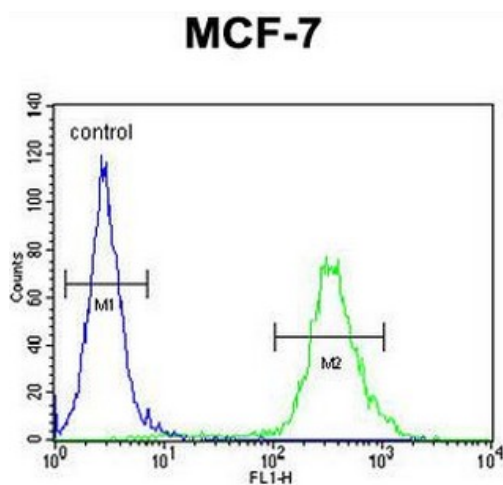
## Product images:



Cl150 Antibody (N-term) western blot analysis in MCF-7 cell line lysates (35ug/lane). This demonstrates the Cl150 antibody detected the Cl150 protein (arrow).



Cl150 Antibody (N-term) immunohistochemistry analysis in formalin fixed and paraffin embedded human breast tissue followed by peroxidase conjugation of the secondary antibody and DAB staining. This data demonstrates the use of the Cl150 Antibody (N-term) for immunohistochemistry. Clinical relevance has not been evaluated.



Cl150 Antibody (N-term) flow cytometric analysis of MCF-7 cells (right histogram) compared to a negative control cell (left histogram). FITC-conjugated goat-anti-rabbit secondary antibodies were used for the analysis.