

Product datasheet for **AP50915PU-N**

CHST8 (Center) Rabbit Polyclonal Antibody

Product data:

Product Type:	Primary Antibodies
Applications:	WB
Recommended Dilution:	ELISA: 1/1000. Western blot: 1/100 - 1/500.
Reactivity:	Human
Host:	Rabbit
Isotype:	Ig
Clonality:	Polyclonal
Immunogen:	KLH conjugated synthetic peptide between 226-255 amino acids from the Central region of human CHST8
Specificity:	This antibody reacts to CHST8.
Formulation:	PBS State: Aff - Purified State: Liquid purified Ig fraction Preservative: 0.09% (W/V) sodium azide
Concentration:	lot specific
Purification:	Affinity chromatography on Protein A
Conjugation:	Unconjugated
Storage:	Store undiluted at 2-8°C for one month or (in aliquots) at -20°C for longer. Avoid repeated freezing and thawing.
Stability:	Shelf life: one year from despatch.
Predicted Protein Size:	48834 Da
Gene Name:	carbohydrate sulfotransferase 8
Database Link:	Entrez Gene 64377 Human Q9H2A9



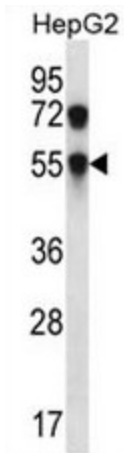
[View online »](#)

Background: Sulfate groups in carbohydrates confer highly specific functions on glycoproteins, glycolipids, and proteoglycans and are critical for cell-cell interaction, signal transduction, and embryonic development. Sulfotransferases, such as CHST8, carry out sulfation of carbohydrates (Hiraoka et al., 2001 [PubMed 11445554]).

Synonyms: Carbohydrate sulfotransferase 8, GalNAc-4-ST1, GalNAc4ST-1

Protein Families: Transmembrane

Product images:



CHST8 Antibody (Center) western blot analysis in HepG2 cell line lysates (35ug/lane). This demonstrates the CHST8 antibody detected the CHST8 protein (arrow).