

Product datasheet for **AP50913PU-N**

CHST6 (C-term) Rabbit Polyclonal Antibody

Product data:

Product Type:	Primary Antibodies
Applications:	IHC, WB
Recommended Dilution:	ELISA: 1/1000. Western blot: 1/100 - 1/500. Immunohistochemistry on paraffin sections: 1/10 - 1/50.
Reactivity:	Human
Host:	Rabbit
Isotype:	Ig
Clonality:	Polyclonal
Immunogen:	KLH conjugated synthetic peptide between 303-333 amino acids from the C-terminal region of human CHST6
Specificity:	This antibody reacts to CHST6.
Formulation:	PBS State: Aff - Purified State: Liquid purified Ig fraction Preservative: 0.09% (W/V) sodium azide
Concentration:	lot specific
Purification:	Affinity chromatography on Protein A
Conjugation:	Unconjugated
Storage:	Store undiluted at 2-8°C for one month or (in aliquots) at -20°C for longer. Avoid repeated freezing and thawing.
Stability:	Shelf life: one year from despatch.
Predicted Protein Size:	44099 Da
Gene Name:	carbohydrate sulfotransferase 6
Database Link:	Entrez Gene 4166 Human Q9GZX3



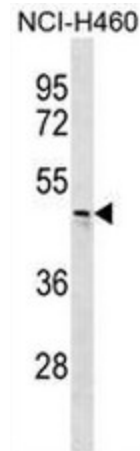
[View online »](#)

Background: The protein encoded by this gene is an enzyme that catalyzes the transfer of a sulfate group to the GlcNAc residues of keratan. Keratan sulfate helps maintain corneal transparency. Defects in this gene are a cause of macular corneal dystrophy (MCD).

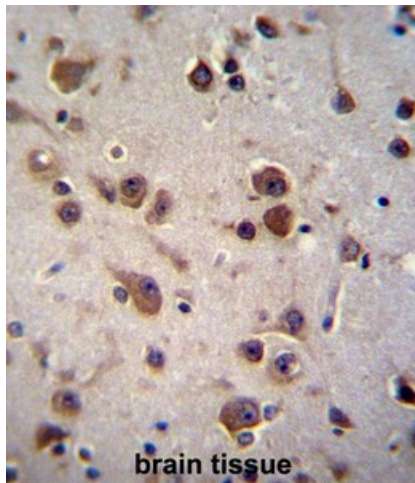
Synonyms: Carbohydrate sulfotransferase 6, GlcNAc6ST-5, C-GlcNAc6ST, GST4-beta, hCGn6ST, Gn6st-5, Gn6st5

Protein Pathways: Keratan sulfate biosynthesis, Metabolic pathways

Product images:



CHST6 Antibody (C-term) western blot analysis in NCI-H460 cell line lysates (35ug/lane). This demonstrates the CHST6 antibody detected the CHST6 protein (arrow).



CHST6 Antibody (C-term) immunohistochemistry analysis in formalin fixed and paraffin embedded human brain tissue followed by peroxidase conjugation of the secondary antibody and DAB staining. This data demonstrates the use of CHST6 Antibody (C-term) for immunohistochemistry. Clinical relevance has not been evaluated.