

Product datasheet for **AP50912PU-N**

CHST3 (N-term) Rabbit Polyclonal Antibody

Product data:

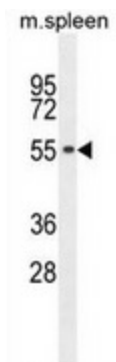
Product Type:	Primary Antibodies
Applications:	IHC, WB
Recommended Dilution:	Immunohistochemistry on Paraffin sections: 1/50-1/100. Western blot: 1/100-1/500. Enzyme immunoassay: 1/1000.
Reactivity:	Human, Mouse
Host:	Rabbit
Isotype:	Ig
Clonality:	Polyclonal
Immunogen:	Synthetic peptide - KLH conjugated - corresponding to the N-terminal region (between 32-62aa) of human CHST3.
Specificity:	This antibody recognizes CHST3 at N-term.
Formulation:	PBS with 0.09% (W/V) Sodium azide State: Aff - Purified State: Liquid purified Ig fraction
Concentration:	lot specific
Purification:	Purified through a Protein A column followed by peptide affinity purification
Conjugation:	Unconjugated
Storage:	Store undiluted at 2-8°C for one month or (in aliquots) at -20°C for longer. Avoid repeated freezing and thawing.
Stability:	Shelf life: one year from despatch.
Gene Name:	carbohydrate sulfotransferase 3
Database Link:	Entrez Gene 9469 Human Q7LGC8
Background:	CHST3 is an enzyme which catalyzes the sulfation of chondroitin, a proteoglycan found in the extracellular matrix and most cells which is involved in cell migration and differentiation.
Synonyms:	Carbohydrate sulfotransferase 3, Chondroitin 6-sulfotransferase, C6ST-1, C6ST1, GST-0



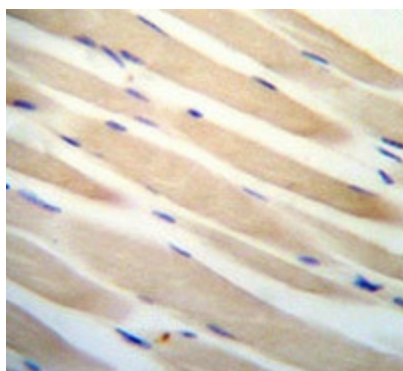
[View online »](#)

Note: **Molecular Weight:** 54706 Da
Protein Families: Transmembrane
Protein Pathways: Chondroitin sulfate biosynthesis

Product images:



Western blot analysis in mouse spleen tissue lysates (35ug/lane) using CHST3 antibody. (N-term). This demonstrates the CHST3 antibody detected the CHST3 protein (arrow).



Immunohistochemistry analysis in human skeletal muscle using CHST3 antibody., followed by peroxidase conjugation of the secondary antibody and DAB staining. This data demonstrates the use of the CHST3 antibody for IHC; Clinical relevance has not been evaluated.