

Product datasheet for **AP50909PU-N**

CHRND (Center) Rabbit Polyclonal Antibody

Product data:

Product Type:	Primary Antibodies
Applications:	FC, WB
Recommended Dilution:	ELISA: 1/1000. Western blot: 1/100 - 1/500. Flow Cytometry: 1/10 - 1/50.
Reactivity:	Human
Host:	Rabbit
Isotype:	Ig
Clonality:	Polyclonal
Immunogen:	KLH conjugated synthetic peptide between 175-204 amino acids from the Central region of human CHRND
Specificity:	This antibody reacts to CHRND.
Formulation:	PBS State: Aff - Purified State: Liquid purified Ig fraction Preservative: 0.09% (W/V) sodium azide
Concentration:	lot specific
Purification:	Affinity chromatography on Protein A
Conjugation:	Unconjugated
Storage:	Store undiluted at 2-8°C for one month or (in aliquots) at -20°C for longer. Avoid repeated freezing and thawing.
Stability:	Shelf life: one year from despatch.
Predicted Protein Size:	58895 Da
Gene Name:	cholinergic receptor nicotinic delta subunit
Database Link:	Entrez Gene 1144 Human Q07001



[View online »](#)

Background:

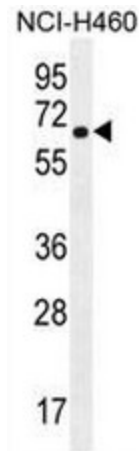
The acetylcholine receptor of muscle has 5 subunits of 4 different types: 2 alpha and 1 each of beta, gamma and delta subunits. After acetylcholine binding, the receptor undergoes an extensive conformation change that affects all subunits and leads to opening of an ion-conducting channel across the plasma membrane.

Synonyms:

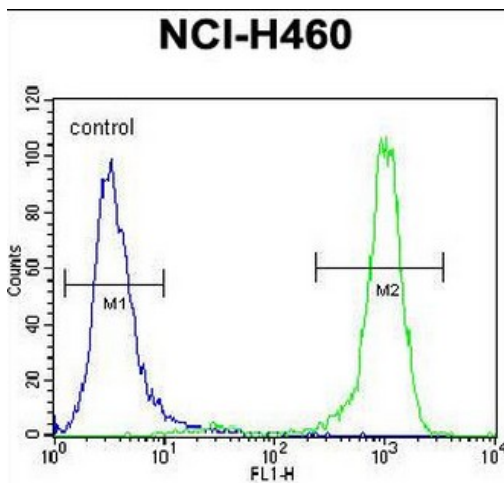
CHRND, ACHR

Protein Families:

Druggable Genome, Ion Channels: Cys-loop Receptors, Transmembrane

Product images:


CHRND Antibody (Center) western blot analysis in NCI-H460 cell line lysates (35ug/lane). This demonstrates the CHRND antibody detected the CHRND protein (arrow).



CHRND Antibody (Center) flow cytometric analysis of NCI-H460 cells (right histogram) compared to a negative control cell (left histogram). FITC-conjugated goat-anti-rabbit secondary antibodies were used for the analysis.