

Product datasheet for **AP50908PU-N**

CHRNA2 (N-term) Rabbit Polyclonal Antibody

Product data:

Product Type:	Primary Antibodies
Applications:	WB
Recommended Dilution:	ELISA: 1/1000. Western blot: 1/100 - 1/500.
Reactivity:	Human
Host:	Rabbit
Isotype:	Ig
Clonality:	Polyclonal
Immunogen:	KLH conjugated synthetic peptide between 49-77 amino acids from the N-terminal region of human CHRNA2
Specificity:	This antibody reacts to CHRNA1.
Formulation:	PBS State: Aff - Purified State: Liquid purified Ig fraction Preservative: 0.09% (W/V) sodium azide
Concentration:	lot specific
Purification:	Affinity chromatography on Protein A
Conjugation:	Unconjugated
Storage:	Store undiluted at 2-8°C for one month or (in aliquots) at -20°C for longer. Avoid repeated freezing and thawing.
Stability:	Shelf life: one year from despatch.
Predicted Protein Size:	59765 Da
Gene Name:	cholinergic receptor nicotinic alpha 2 subunit
Database Link:	Entrez Gene 1135 Human Q15822



[View online »](#)

Background:

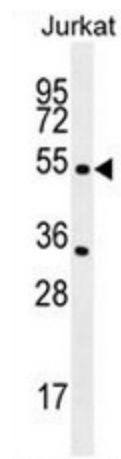
Nicotinic acetylcholine receptors (nAChRs) are ligand-gated ion channels formed by a pentameric arrangement of alpha and beta subunits to create distinct muscle and neuronal receptors. Neuronal receptors are found throughout the peripheral and central nervous system where they are involved in fast synaptic transmission. This gene encodes an alpha subunit that is widely expressed in the brain. The proposed structure for nAChR subunits is a conserved N-terminal extracellular domain followed by three conserved transmembrane domains, a variable cytoplasmic loop, a fourth conserved transmembrane domain, and a short C-terminal extracellular region. Mutations in this gene cause autosomal dominant nocturnal frontal lobe epilepsy type 4. Single nucleotide polymorphisms (SNPs) in this gene have been associated with nicotine dependence.

Synonyms:

CHRNA2, Nicotinic acetylcholine receptor subunit alpha 2

Protein Families:

Druggable Genome, Ion Channels: Cys-loop Receptors, Transmembrane

Product images:


CHRNA2 Antibody (N-term) western blot analysis in Jurkat cell line lysates (35ug/lane). This demonstrates the CHRNA2 antibody detected the CHRNA2 protein (arrow).