

Product datasheet for **AP50905PU-N**

Chordin (CHRD) (Center) Rabbit Polyclonal Antibody

Product data:

Product Type:	Primary Antibodies
Applications:	WB
Recommended Dilution:	Western blot: 1/100-1/500. Enzyme immunoassay: 1/1000.
Reactivity:	Human, Mouse
Host:	Rabbit
Isotype:	Ig
Clonality:	Polyclonal
Immunogen:	Synthetic peptide - KLH conjugated - corresponding to the central region (between 438-467aa) of human Chordin
Specificity:	This antibody recognizes Chordin.
Formulation:	PBS with 0.09% (W/V) Sodium azide State: Aff - Purified State: Liquid purified Ig fraction
Concentration:	lot specific
Purification:	Purified through a Protein A column followed by peptide affinity purification
Conjugation:	Unconjugated
Storage:	Store undiluted at 2-8°C for one month or (in aliquots) at -20°C for longer. Avoid repeated freezing and thawing.
Stability:	Shelf life: one year from despatch.
Gene Name:	chordin
Database Link:	Entrez Gene 8646 Human Q9H2X0



[View online »](#)

Background: The CHRD gene encodes a secreted protein, Chordin that dorsalizes early vertebrate embryonic tissues by binding to ventralizing TGF-beta-like bone morphogenetic proteins and sequestering them in latent complexes. Chordin may also have roles in organogenesis and during adulthood. Multiple transcript variants encoding distinct isoforms have been identified for this gene. Other alternative splice variants have been described but their full length sequence has not been determined.

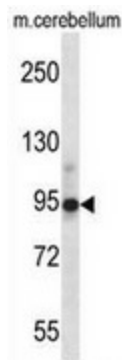
Synonyms: CHRD

Note: **Molecular Weight:** 102032 Da

Protein Families: Secreted Protein

Protein Pathways: TGF-beta signaling pathway

Product images:



Western blot analysis in mouse cerebellum tissue lysates (35ug/lane) using Chordin antibody. This demonstrates the CHRD antibody detected the CHRD protein (arrow).