

## Product datasheet for **AP50904PU-N**

### CHPT1 (N-term) Rabbit Polyclonal Antibody

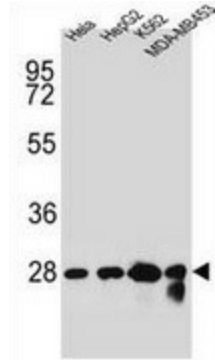
#### Product data:

Product Type:	Primary Antibodies
Applications:	FC, WB
Recommended Dilution:	<b>Flow cytometry:</b> 1/10-1/50. <b>Western blotting:</b> 1/1000.
Reactivity:	Human, Mouse
Host:	Rabbit
Isotype:	Ig
Clonality:	Polyclonal
Immunogen:	Synthetic peptide - KLH conjugated - corresponding to the N-terminal region (between 7-33 aa) of human Cholinephosphotransferase 1/CHPT1.
Specificity:	This antibody detects human Cholinephosphotransferase 1 at N-term
Formulation:	PBS with 0.09% (W/V) Sodium Azide. State: Aff - Purified State: Liquid purified Ig fraction
Concentration:	lot specific
Purification:	Purified through a protein A column; followed by peptide affinity purification.
Conjugation:	Unconjugated
Storage:	Store the antibody undiluted at 2-8°C for one month or (in aliquots) at -20°C for longer. Avoid repeated freezing and thawing.
Stability:	Shelf life: one year from despatch.
Gene Name:	choline phosphotransferase 1
Database Link:	<a href="#">Entrez Gene 56994 Human Q8WUD6</a>
Synonyms:	AAPT1-like protein, CHPT1, CPT1, MSTP022
Note:	<b>Molecular Weight:</b> 45097 Da
Protein Families:	Transmembrane
Protein Pathways:	Ether lipid metabolism, Glycerophospholipid metabolism, Metabolic pathways

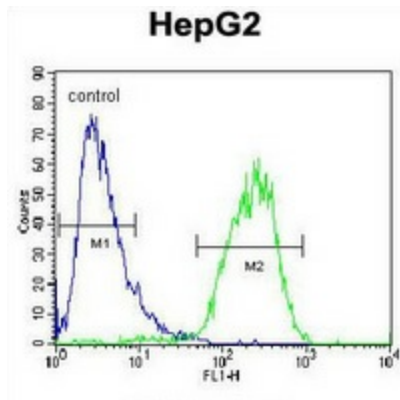


[View online »](#)

**Product images:**



Western blot analysis in HeLa, HepG2, K562, MDA-MB453 cell line lysates (35ug/lane) using Cholinephosphotransferase 1 antibody. (N-term). This demonstrates the CHPT1 antibody detected the CHPT1 protein (arrow).



Flow cytometric analysis of HepG2 cells (right histogram) compared to a negative control cell (left histogram) using Cholinephosphotransferase 1 antibody. (N-term), followed by FITC-conjugated goat-anti-rabbit secondary antibodies.