

Product datasheet for **AP50901PU-N**

Chimaerin 2 (CHN2) (Center) Rabbit Polyclonal Antibody

Product data:

Product Type:	Primary Antibodies
Applications:	WB
Recommended Dilution:	This antibody is suitable for Western blotting . The suggested dilution is: 1/100-1/500.
Reactivity:	Human, Mouse
Host:	Rabbit
Isotype:	Ig
Clonality:	Polyclonal
Immunogen:	Synthetic peptide - KLH conjugated - corresponding to the central region (between 162-192aa) of human CHN2.
Specificity:	This antibody detects ARHGAP3/CHN2.
Formulation:	PBS with 0.09% (W/V) Sodium Azide. State: Aff - Purified State: Liquid purified Ig fraction
Concentration:	lot specific
Purification:	Purified through a protein A column; followed by peptide affinity purification.
Conjugation:	Unconjugated
Storage:	Store the antibody undiluted at 2-8°C for one month or (in aliquots) at -20°C for longer. Avoid repeated freezing and thawing.
Stability:	Shelf life: one year from despatch.
Gene Name:	chimerin 2
Database Link:	Entrez Gene 69993 Mouse Entrez Gene 1124 Human P52757



[View online »](#)

Background:

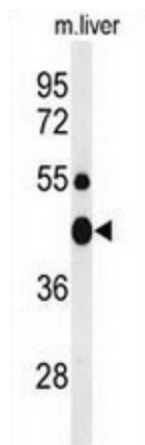
The CHN2 gene is a member of the chimerin family and encodes a protein with a phorbol-ester/DAG-type zinc finger, a Rho-GAP domain and an SH2 domain. This protein has GTPase-activating protein activity that is regulated by phospholipid binding and binding of diacylglycerol (DAG) induces translocation of the protein from the cytosol to the Golgi apparatus membrane. The protein plays a role in the proliferation and migration of smooth muscle cells. Decreased expression of this gene is associated with high-grade gliomas and breast tumors, and increased expression of this gene is associated with lymphomas. Mutations in this gene have been associated with schizophrenia in men. Alternate transcriptional splice variants, encoding different isoforms, have been characterized.

Synonyms:

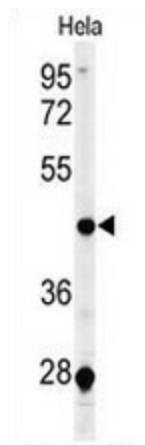
Beta-chimaerin, BCH, Beta-chimerin

Note:

Molecular Weight: 53924 Da

Product images:


Western blot analysis of CHN2 (arrow) in mouse liver tissue lysates (35ug/lane) using ARHGAP3/CHN2 antibody.



Western blot analysis of CHN2 (arrow) in HeLa cell line lysates (35ug/lane) using ARHGAP3/CHN2 antibody.