

Product datasheet for **AP50899PU-N**

CHMP6 (N-term) Rabbit Polyclonal Antibody

Product data:

Product Type:	Primary Antibodies
Applications:	WB
Recommended Dilution:	This antibody is suitable for Western blotting . The suggested dilution is: 1/100-1/500.
Reactivity:	Human
Host:	Rabbit
Isotype:	Ig
Clonality:	Polyclonal
Immunogen:	Synthetic peptide - KLH conjugated - corresponding to the N-terminal region (between 1-30aa) of human CHMP6.
Specificity:	This antibody detects human CHMP6 at N-term.
Formulation:	PBS with 0.09% (W/V) Sodium Azide. State: Aff - Purified State: Liquid purified Ig fraction
Concentration:	lot specific
Purification:	Purified through a protein A column; followed by peptide affinity purification.
Conjugation:	Unconjugated
Storage:	Store the antibody undiluted at 2-8°C for one month or (in aliquots) at -20°C for longer. Avoid repeated freezing and thawing.
Stability:	Shelf life: one year from despatch.
Gene Name:	charged multivesicular body protein 6
Database Link:	Entrez Gene 79643 Human Q96FZ7
Background:	CHMP6 belongs to the chromatin-modifying protein/charged multivesicular body protein (CHMP) family. These proteins are components of ESCRT-III (endosomal sorting complex required for transport III), a complex involved in degradation of surface receptor proteins and formation of endocytic multivesicular bodies (MVBs). Some CHMPs have both nuclear and cytoplasmic/vesicular distributions, and one such CHMP, CHMP1A, is required for both MVB formation and regulation of cell cycle progression (<i>Tsang et al., 2006 [PMID 16730941]</i>).



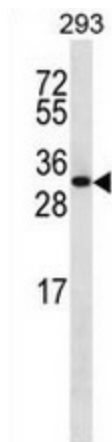
[View online »](#)

Synonyms: VPS20

Note: **Molecular Weight:** 23485 Da

Protein Pathways: Endocytosis

Product images:



Western blot analysis in 293 cell line lysates (35ug/lane) using CHMP6 antibody. (N-term). This demonstrates the CHMP6 antibody detected the CHMP6 protein (arrow).