

## Product datasheet for **AP50896PU-N**

### CHIC2 (C-term) Rabbit Polyclonal Antibody

#### Product data:

Product Type:	Primary Antibodies
Applications:	WB
Recommended Dilution:	This antibody is suitable for <b>Western blotting</b> and (Peptid-)ELISA. The suggested dilution is: ELISA: 1/1000 Western blotting: 1:100-1/ 500
Reactivity:	Human, Mouse
Host:	Rabbit
Isotype:	Ig
Clonality:	Polyclonal
Immunogen:	KLH conjugated synthetic peptide from the C-terminal region (between 145-173 aa) of Human CHIC2.
Specificity:	This antibody detects CHIC2 (C-term).
Formulation:	PBS with 0.09% (W/V) Sodium Azide. State: Aff - Purified State: Liquid purified Ig fraction
Concentration:	lot specific
Purification:	Purified through a protein A column; followed by peptide affinity purification.
Conjugation:	Unconjugated
Storage:	Store the antibody undiluted at 2-8°C for one month or (in aliquots) at -20°C for longer. Avoid repeated freezing and thawing.
Stability:	Shelf life: one year from despatch.
Gene Name:	cysteine rich hydrophobic domain 2
Database Link:	<a href="#">Entrez Gene 74277 Mouse</a> <a href="#">Entrez Gene 26511 Human</a> <a href="#">Q9UKJ5</a>
Background:	CHIC2 - member of the CHIC protein family - contains a cysteine-rich hydrophobic (CHIC) motif. It is localized to vesicular structures and the plasma membrane.
Synonyms:	BTL

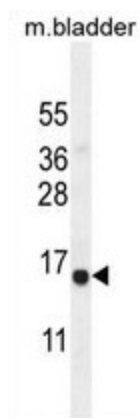


[View online »](#)

Note: **Molecular Weight:** 19254 Da

Protein Families: Druggable Genome, Transmembrane

### Product images:



Western blot analysis in mouse bladder tissue lysates (35ug/lane) using CHIC2 antibody (.). This demonstrates the CHIC2 antibody detected the CHIC2 protein (arrow).