

Product datasheet for **AP50895PU-N**

AMCase (CHIA) (N-term) Rabbit Polyclonal Antibody

Product data:

Product Type:	Primary Antibodies
Applications:	FC, WB
Recommended Dilution:	Peptide ELISA: 1/1000. Western blot: 1/100 - 1/500. Flow cytometric: 1/10 - /50.
Reactivity:	Human, Mouse
Host:	Rabbit
Isotype:	Ig
Clonality:	Polyclonal
Immunogen:	KLH conjugated synthetic peptide between 20-47 amino acids from the N-terminal region of human CHIA.
Specificity:	This antibody reacts to CHIA.
Formulation:	PBS State: Aff - Purified State: Liquid purified Ig fraction Preservative: 0.09% (W/V) sodium azide
Concentration:	lot specific
Purification:	Affinity chromatography on Protein A
Conjugation:	Unconjugated
Storage:	Store the antibody undiluted at 2-8°C for one month or (in aliquots) at -20°C for longer. Avoid repeated freezing and thawing.
Stability:	Shelf life: one year from despatch.
Predicted Protein Size:	52271 Da
Gene Name:	chitinase, acidic
Database Link:	Entrez Gene 27159 Human Q9BZP6



[View online »](#)

Background:

CHIA degrades chitin and chitotriose. May participate in the defense against nematodes and other pathogens. There are 3 named isoforms produced by alternative splicing. CHIA is induced via a T helper-2 (Th2)-specific, interleukin-13-mediated pathway in epithelial cells and macrophages. CHIA may be an important mediator of IL13-induced responses in Th2-dominated disorders such as asthma. CHIA hydrolysis N-acetyl-beta-D-glucosaminide 1,4-beta-linkages in chitin and chitodextrins.

Synonyms:

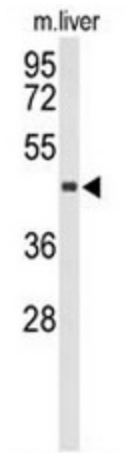
Acidic mammalian chitinase, CHIA, TSA1902

Protein Families:

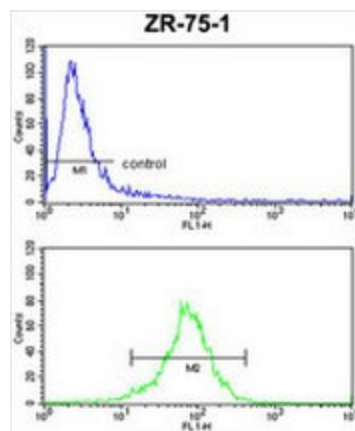
Secreted Protein

Protein Pathways:

Amino sugar and nucleotide sugar metabolism

Product images:


Western blot analysis of CHIA Antibody (N-term) in mouse liver tissue lysates (35ug/lane). CHIA (arrow) was detected using the purified Pab.



CHIA Antibody (N-term) FC analysis of ZR-75-1 cells (bottom histogram) compared to a negative control cell (top histogram). FITC-conjugated goat-anti-rabbit secondary antibodies were used for the analysis.