

## Product datasheet for **AP50888PU-N**

### CHD1L (Center) Rabbit Polyclonal Antibody

#### Product data:

Product Type:	Primary Antibodies
Applications:	WB
Recommended Dilution:	<b>ELISA:</b> 1/1000. <b>Western Blot:</b> 1/100 - 1/500.
Reactivity:	Human
Host:	Rabbit
Isotype:	Ig
Clonality:	Polyclonal
Immunogen:	KLH conjugated synthetic peptide between 560-590 amino acids from the Central region of human CHD1L
Specificity:	This antibody reacts to CHD1L.
Formulation:	PBS State: Aff - Purified State: Liquid purified Ig fraction Preservative: 0.09% (W/V) sodium azide
Concentration:	lot specific
Purification:	Affinity chromatography on Protein A
Conjugation:	Unconjugated
Storage:	Store the antibody undiluted at 2-8°C for one month or (in aliquots) at -20°C for longer. Avoid repeated freezing and thawing.
Stability:	Shelf life: one year from despatch.
Predicted Protein Size:	78kd Isoform 3. 100984 Da
Gene Name:	chromodomain helicase DNA binding protein 1 like
Database Link:	<a href="#">Entrez Gene 9557 Human Q86WJ1</a>



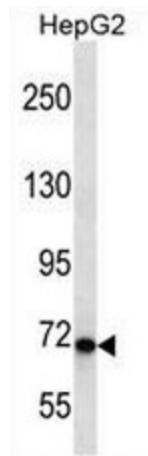
[View online »](#)

**Background:**

In response to DNA strand breaks, chromatin adopts a relaxed structure due to the addition of poly(ADP-ribose) (PAR) to chromatin proteins by PARP enzymes (see PARP1; MIM 173870), and this relaxation facilitates the repair of DNA damage. CHD1L interacts with PAR and has a role in chromatin relaxation following DNA damage (Ahel et al., 2009 [PubMed 19661379]). [supplied by OMIM].

**Synonyms:**

ALC1

**Product images:**

CHD1L Antibody (Center) western blot analysis in HepG2 cell line lysates (35ug/lane). This demonstrates the CHD1L antibody detected the CHD1L protein (arrow).