

Product datasheet for **AP50887PU-N**

CHCHD2 (Center) Rabbit Polyclonal Antibody

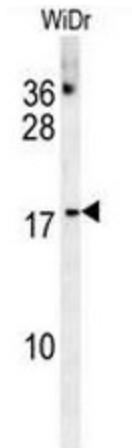
Product data:

Product Type:	Primary Antibodies
Applications:	FC, IHC, WB
Recommended Dilution:	ELISA: 1/1000. Western Blot: 1/100 - 1/500. Immunohistochemistry on paraffin sections: 1/50 - 1/100. Flow Cytometry: 1/10 - 1/50.
Reactivity:	Human
Host:	Rabbit
Isotype:	Ig
Clonality:	Polyclonal
Immunogen:	KLH conjugated synthetic peptide between 81-111 amino acids from the Central region of human CHCHD2
Specificity:	This antibody reacts to CHCHD2.
Formulation:	PBS State: Aff - Purified State: Liquid purified Ig fraction Preservative: 0.09% (W/V) sodium azide
Concentration:	lot specific
Purification:	Affinity chromatography on Protein A
Conjugation:	Unconjugated
Storage:	Store the antibody undiluted at 2-8°C for one month or (in aliquots) at -20°C for longer. Avoid repeated freezing and thawing.
Stability:	Shelf life: one year from despatch.
Predicted Protein Size:	15513 Da
Gene Name:	coiled-coil-helix-coiled-coil-helix domain containing 2
Database Link:	Entrez Gene 51142 Human Q9Y6H1
Synonyms:	C7orf17

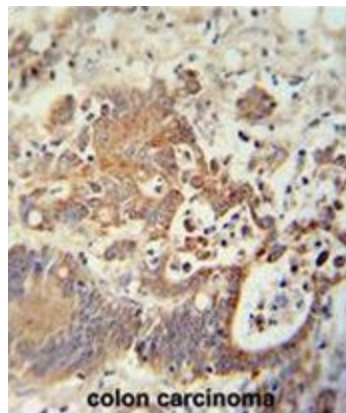


[View online »](#)

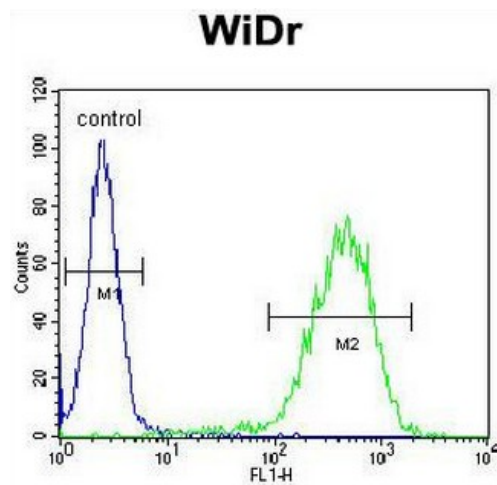
Product images:



CHCHD2 Antibody (Center) western blot analysis in WiDr cell line lysates (35ug/lane). This demonstrates the CHCHD2 antibody detected the CHCHD2 protein (arrow).



CHCHD2 antibody (Center) immunohistochemistry analysis in formalin fixed and paraffin embedded human colon carcinoma followed by peroxidase conjugation of the secondary antibody and DAB staining. This data demonstrates the use of the CHCHD2 antibody (Center) for immunohistochemistry. Clinical relevance has not been evaluated.



CHCHD2 Antibody (Center) flow cytometric analysis of WiDr cells (right histogram) compared to a negative control cell (left histogram). FITC-conjugated goat-anti-rabbit secondary antibodies were used for the analysis.