

Product datasheet for **AP50886PU-N**

CHCHD10 (N-term) Rabbit Polyclonal Antibody

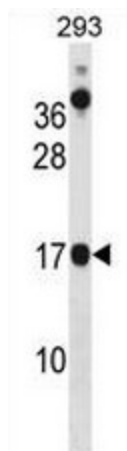
Product data:

Product Type:	Primary Antibodies
Applications:	WB
Recommended Dilution:	ELISA: 1/1000. Western Blot: 1/100 - 1/500.
Reactivity:	Human
Host:	Rabbit
Isotype:	Ig
Clonality:	Polyclonal
Immunogen:	KLH conjugated synthetic peptide between 1-30 amino acids from the N-terminal region of human CHCHD10
Specificity:	This antibody reacts to CHCHD10.
Formulation:	PBS State: Aff - Purified State: Liquid purified Ig fraction Preservative: 0.09% (W/V) sodium azide
Concentration:	lot specific
Purification:	Affinity chromatography on Protein A
Conjugation:	Unconjugated
Storage:	Store the antibody undiluted at 2-8°C for one month or (in aliquots) at -20°C for longer. Avoid repeated freezing and thawing.
Stability:	Shelf life: one year from despatch.
Predicted Protein Size:	14149 Da
Gene Name:	coiled-coil-helix-coiled-coil-helix domain containing 10
Database Link:	Entrez Gene 400916 Human Q8WYQ3
Synonyms:	Coiled-coil-helix-coiled-coil-helix domain-containing protein 10, mitochondrial,C22orf16



[View online »](#)

Product images:



CHCHD10 Antibody (N-term) western blot analysis in 293 cell line lysates (35ug/lane). This demonstrates the CHCHD10 antibody detected the CHCHD10 protein (arrow).