

Product datasheet for **AP50885PU-N**

Choline Acetyltransferase (CHAT) (N-term) Rabbit Polyclonal Antibody

Product data:

Product Type:	Primary Antibodies
Applications:	IF, WB
Recommended Dilution:	Peptide ELISA: 1/1000. Western Blot: 1/1000. Immunofluorescence: 1/10 - 1/50.
Reactivity:	Human, Mouse
Host:	Rabbit
Isotype:	Ig
Clonality:	Polyclonal
Immunogen:	KLH conjugated synthetic peptide between 98-128 amino acids from the N-terminal region of human CHAT.
Specificity:	This antibody reacts to CHAT.
Formulation:	PBS State: Purified State: Liquid purified Ig fraction Preservative: 0.09% (W/V) sodium azide
Concentration:	lot specific
Purification:	Saturated Ammonium Sulfate (SAS) precipitation
Conjugation:	Unconjugated
Storage:	Store the antibody undiluted at 2-8°C for one month or (in aliquots) at -20°C for longer. Avoid repeated freezing and thawing.
Stability:	Shelf life: one year from despatch.
Predicted Protein Size:	82536 Da
Gene Name:	choline O-acetyltransferase
Database Link:	Entrez Gene 12647 Mouse Entrez Gene 1103 Human P28329



[View online »](#)

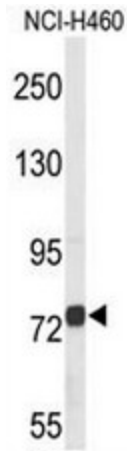
Background: CHAT is an enzyme which catalyzes the biosynthesis of the neurotransmitter acetylcholine. This gene product is a characteristic feature of cholinergic neurons, and changes in these neurons may explain some of the symptoms of Alzheimer disease.

Synonyms: Choline O-acetyltransferase, Choline acetylase, CHOACTase, ChAT, EC=2.3.1.6

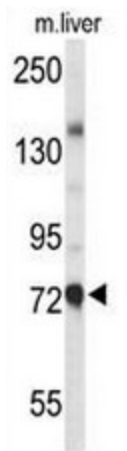
Protein Families: Druggable Genome

Protein Pathways: Glycerophospholipid metabolism

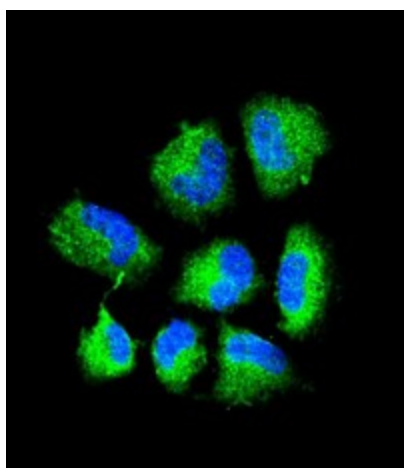
Product images:



Western blot analysis of CHAT Antibody (N-term) in NCI-H460 cell line lysates (35ug/lane). CHAT (arrow) was detected using the purified Pab.



Western blot analysis of CHAT Antibody (N-term) in mouse liver tissue lysates (35ug/lane). CHAT (arrow) was detected using the purified Pab.



Confocal immunofluorescent analysis of CHAT Antibody (N-term) with NCI-H460 cell followed by Alexa Fluor® 488-conjugated goat anti-rabbit IgG (green). DAPI was used to stain the cell nuclear (blue).