

Product datasheet for **AP50883PU-N**

CHADL (Center) Rabbit Polyclonal Antibody

Product data:

Product Type:	Primary Antibodies
Applications:	WB
Recommended Dilution:	ELISA: 1/1000. Western Blot: 1/100 - 1/500.
Reactivity:	Human
Host:	Rabbit
Isotype:	Ig
Clonality:	Polyclonal
Immunogen:	KLH conjugated synthetic peptide between 405-434 amino acids from the Central region of human CHADL
Specificity:	This antibody reacts to CHADL.
Formulation:	PBS State: Aff - Purified State: Liquid purified Ig fraction Preservative: 0.09% (W/V) sodium azide
Concentration:	lot specific
Purification:	Affinity chromatography on Protein A
Conjugation:	Unconjugated
Storage:	Store the antibody undiluted at 2-8°C for one month or (in aliquots) at -20°C for longer. Avoid repeated freezing and thawing.
Stability:	Shelf life: one year from despatch.
Predicted Protein Size:	Isoform2 74kd. 82388 Da
Gene Name:	chondroadherin like
Database Link:	Entrez Gene 150356 Human Q6NUI6



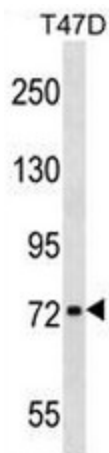
[View online »](#)

Background:

Members of the small leucine-rich proteoglycan (SLRP) family are mostly extracellular proteins that function upstream of multiple signaling cascades. They affect intracellular phosphorylation and modulate distinct pathways, such as those driven by Toll-like receptors, TGF β and receptor tyrosine kinases. As a member of the SLRP family, CHADL (Chondroadherin-like protein) is a 762 amino acid protein containing 21 LRR (leucine-rich) repeats, which promote protein-ligand interactions. Chondroadherin, a closely related protein, promotes attachment of chondrocytes, osteoblasts and fibroblasts and also plays an important role in the regulation of chondrocyte proliferation and growth. CHADL is a secreted protein that is located in the extracellular space. There are two isoforms of CHADL that exist as a result of alternative splicing events.

Synonyms:

Chondroadherin-like protein,SLRR4B

Product images:

CHADL Antibody (Center) western blot analysis in T47D cell line lysates (35ug/lane). This demonstrates the CHADL antibody detected the CHADL protein (arrow).